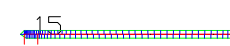
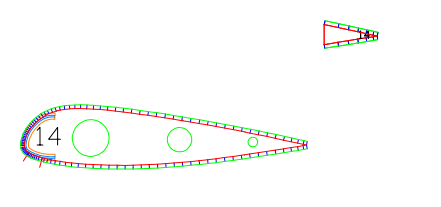
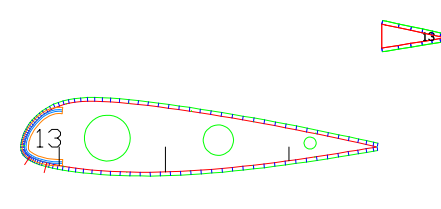
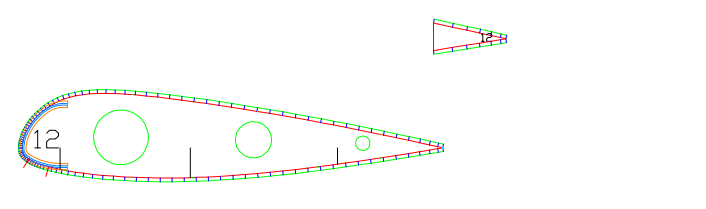
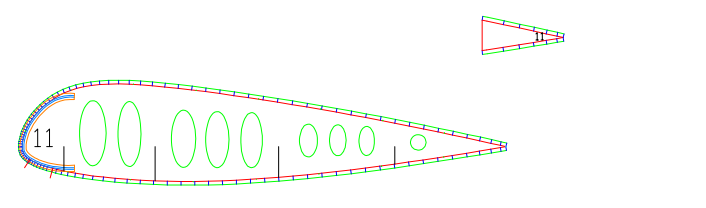
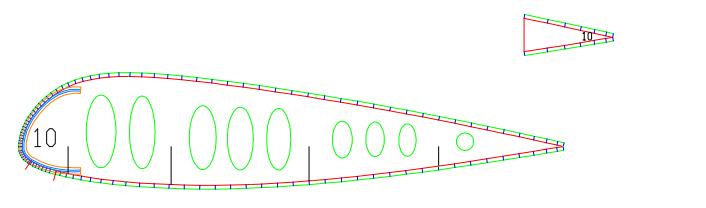
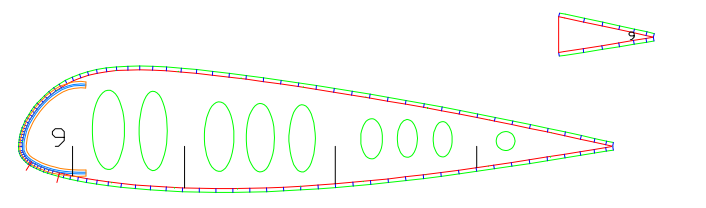
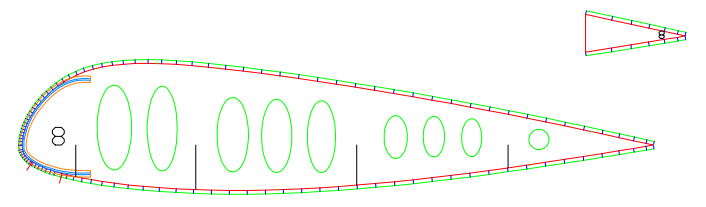
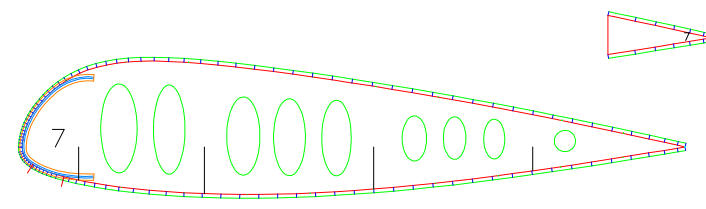
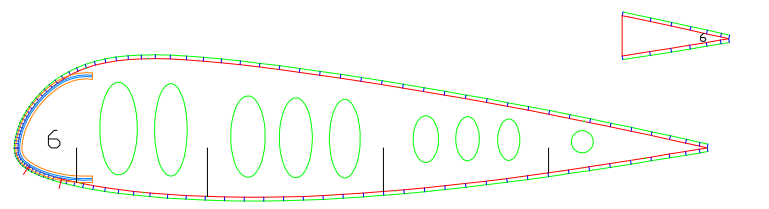
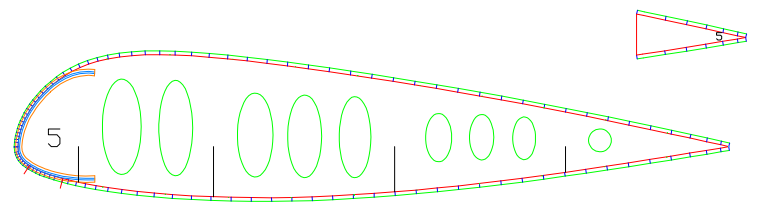
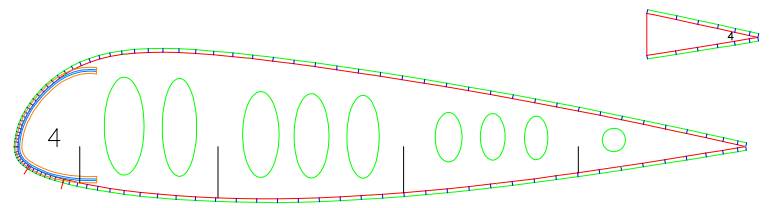
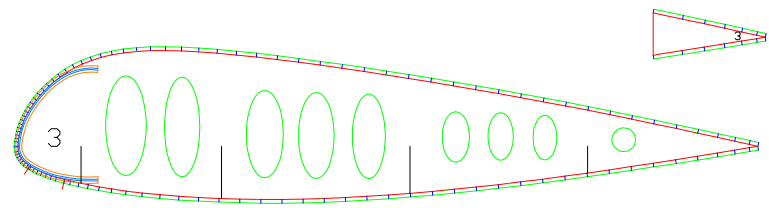
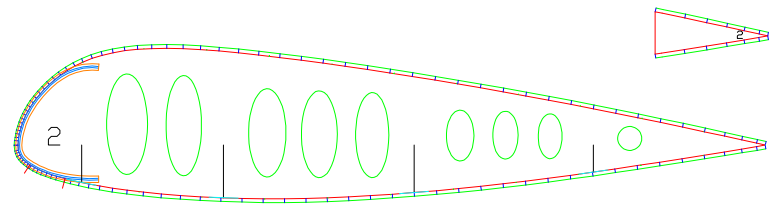
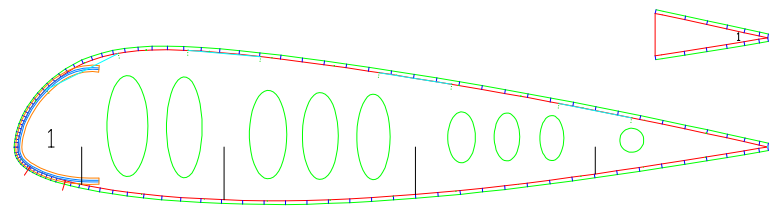
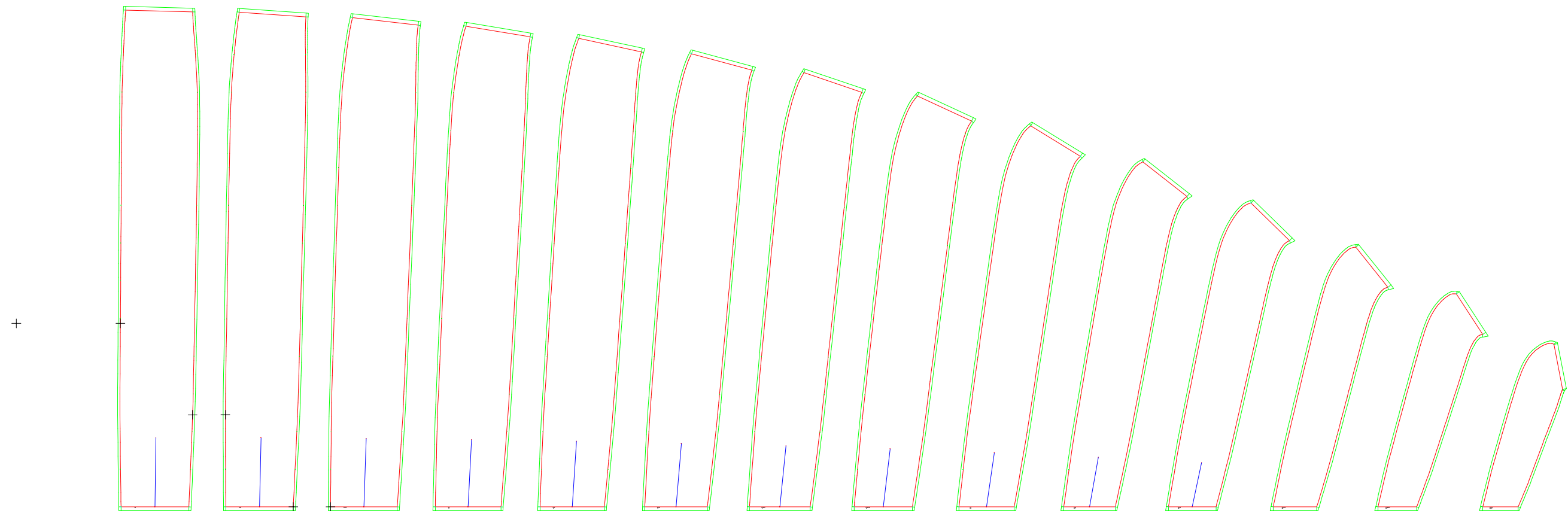


LABORATORI D'ENVOL gnuA3
Flat area (m2) : 25.00
Flat span (m) : 10.37
Flat aspect ratio : 4.30
Cells number : 28

1-1 PLANFORM AND VAULT



Leading edge

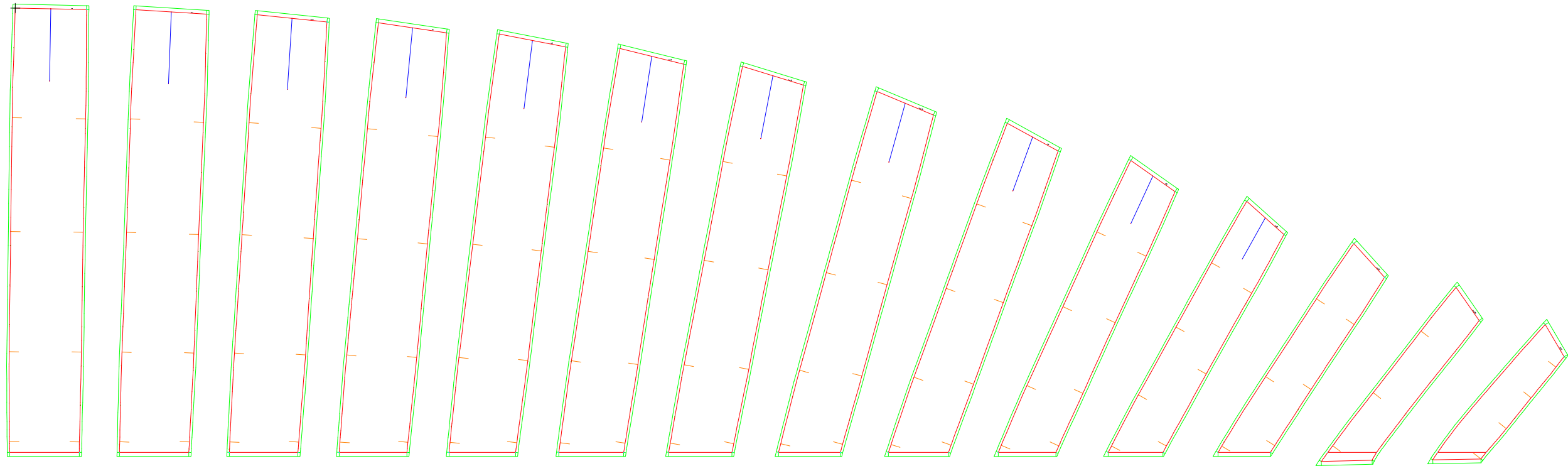


Trailing edge

1-3 EXTRADOS PANELS

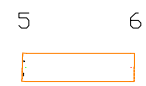
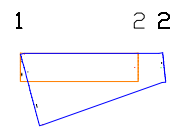
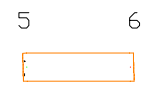
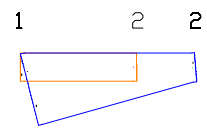
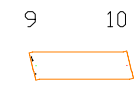
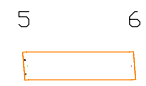
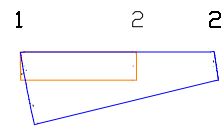
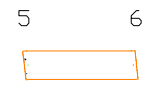
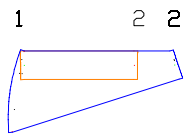
Trailing edge

+



Leading edge

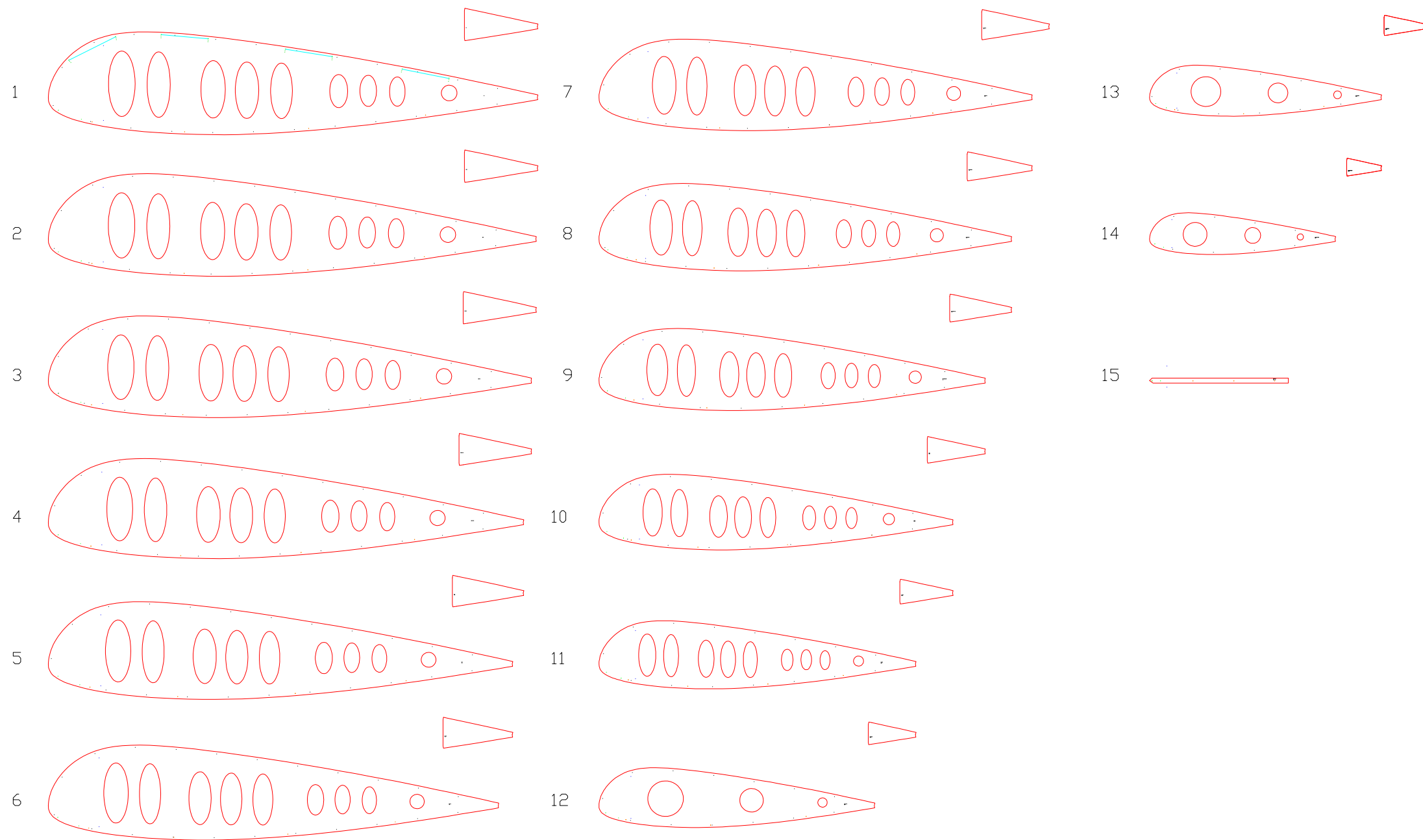
2-3 INTRADOS PANELS



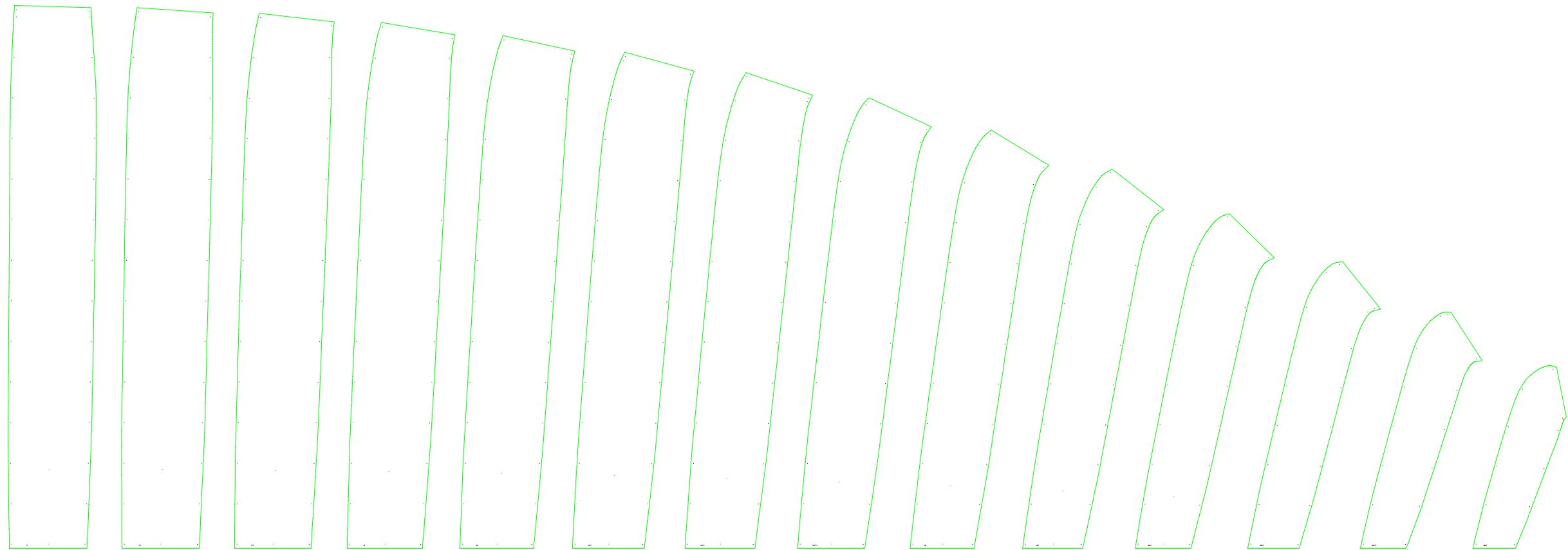


List of nylon rods (bloc 1)

Group	1	
Jonc	1	87.6
Jonc	2	87.3
Jonc	3	86.5
Jonc	4	85.1
Jonc	5	83.1
Jonc	6	80.5
Jonc	7	77.5
Jonc	8	73.8
Jonc	9	69.0
Jonc	10	63.2
Group	2	
Jonc	11	56.5
Jonc	12	49.1
Jonc	13	41.2
Jonc	14	33.0



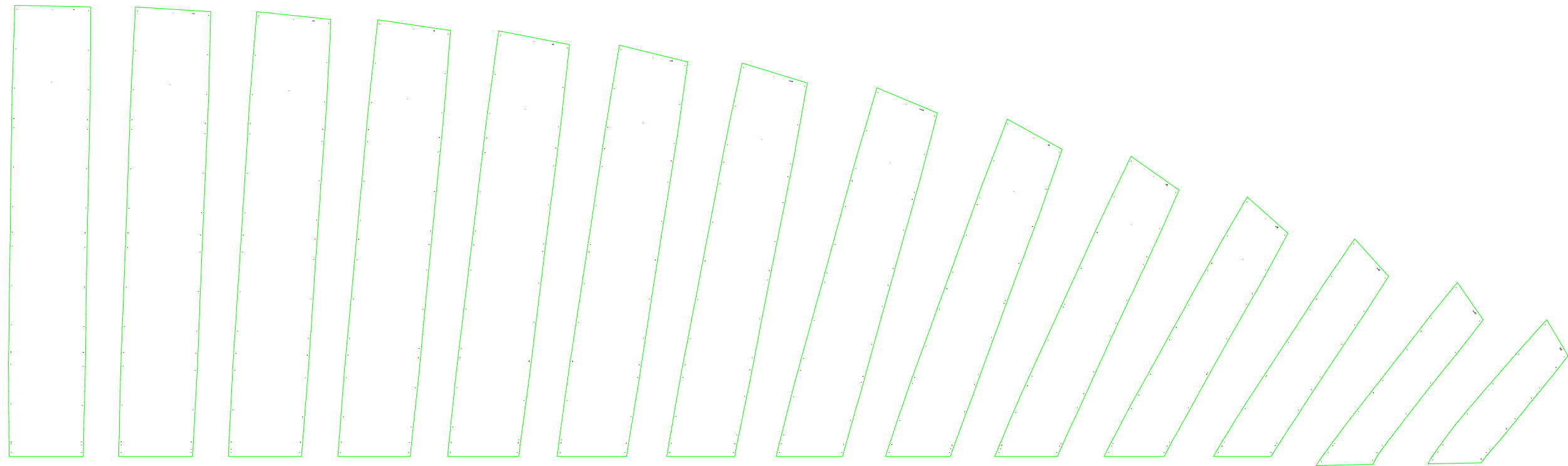
Leading edge



Trailing edge

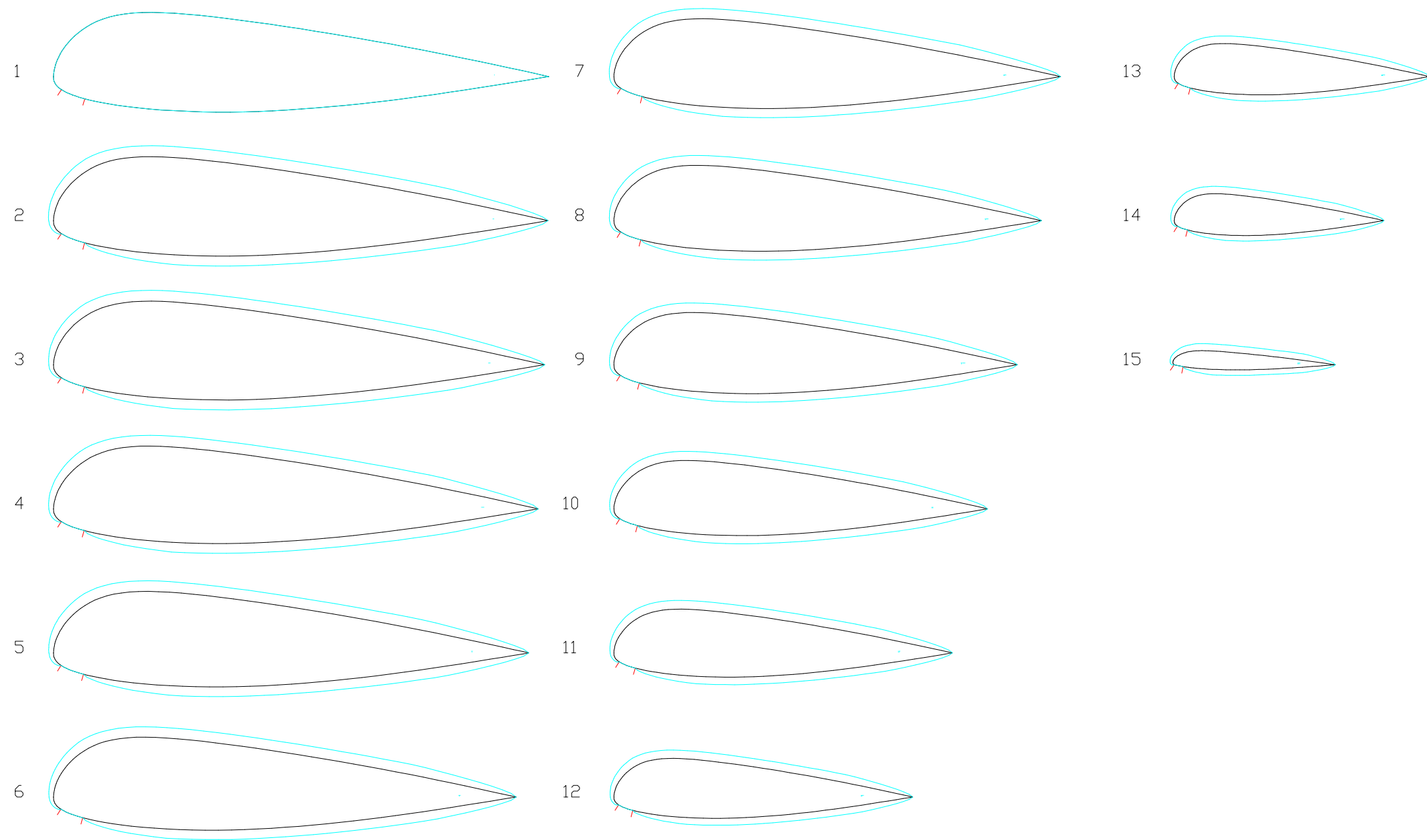
1-5 EXTRADOS PANELS (FOR CUTTING TABLE)

Trailing edge



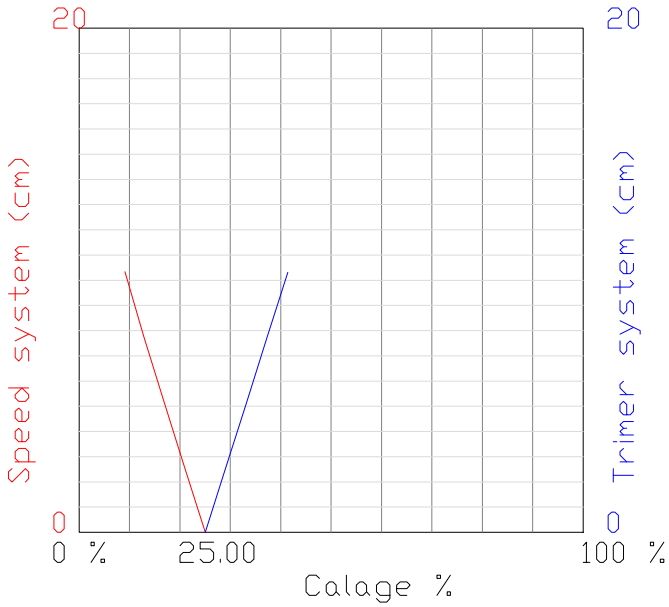
Leading edge

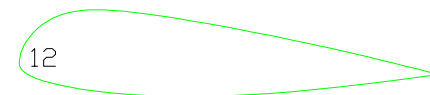
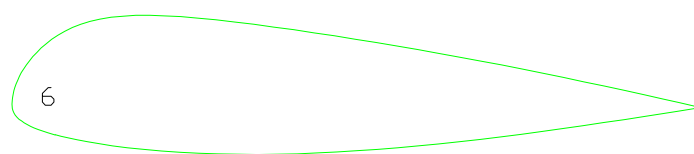
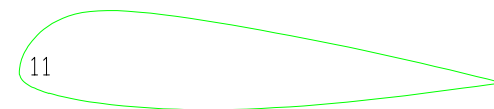
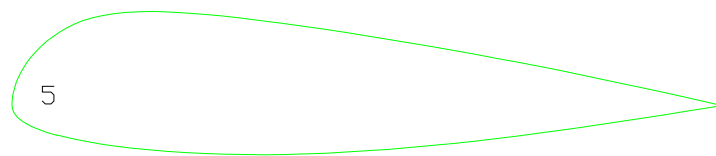
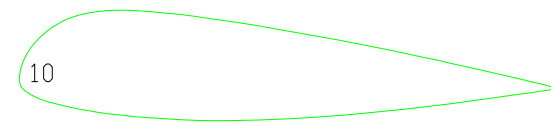
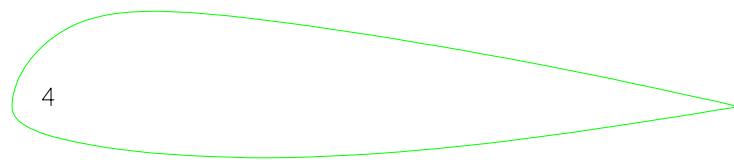
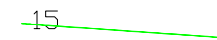
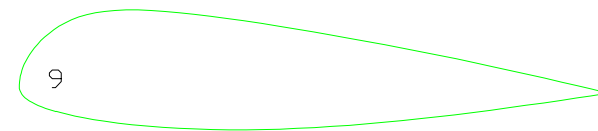
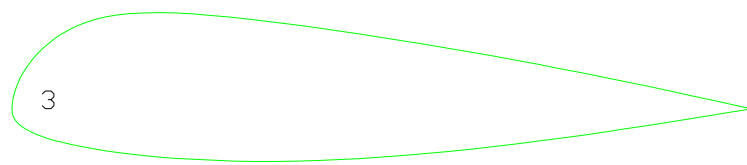
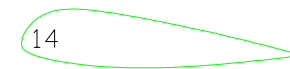
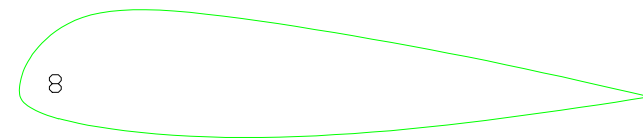
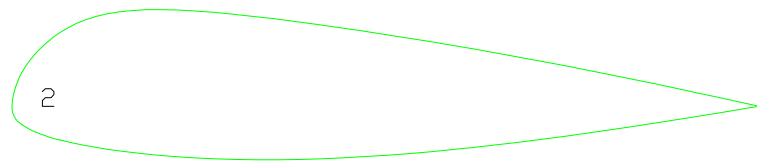
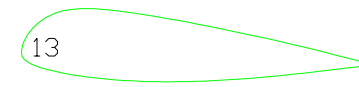
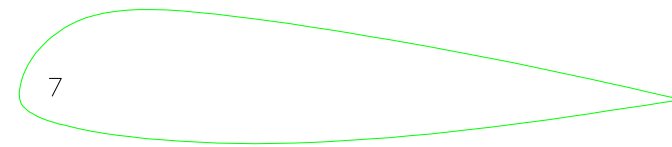
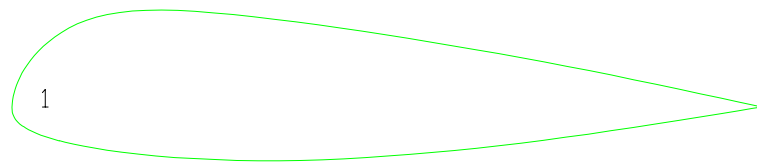
2-5 INTRADOS PANELS (FOR CUTTING TABLE)



1-8 MIDDLE AND MIDDLE OVALIZED AIRFOILS

calage= 25.00
center pressure= 35.00
glide ratio= 7.50
glide angle= 7.59
angle of attack= 5.16
assiette= 2.43

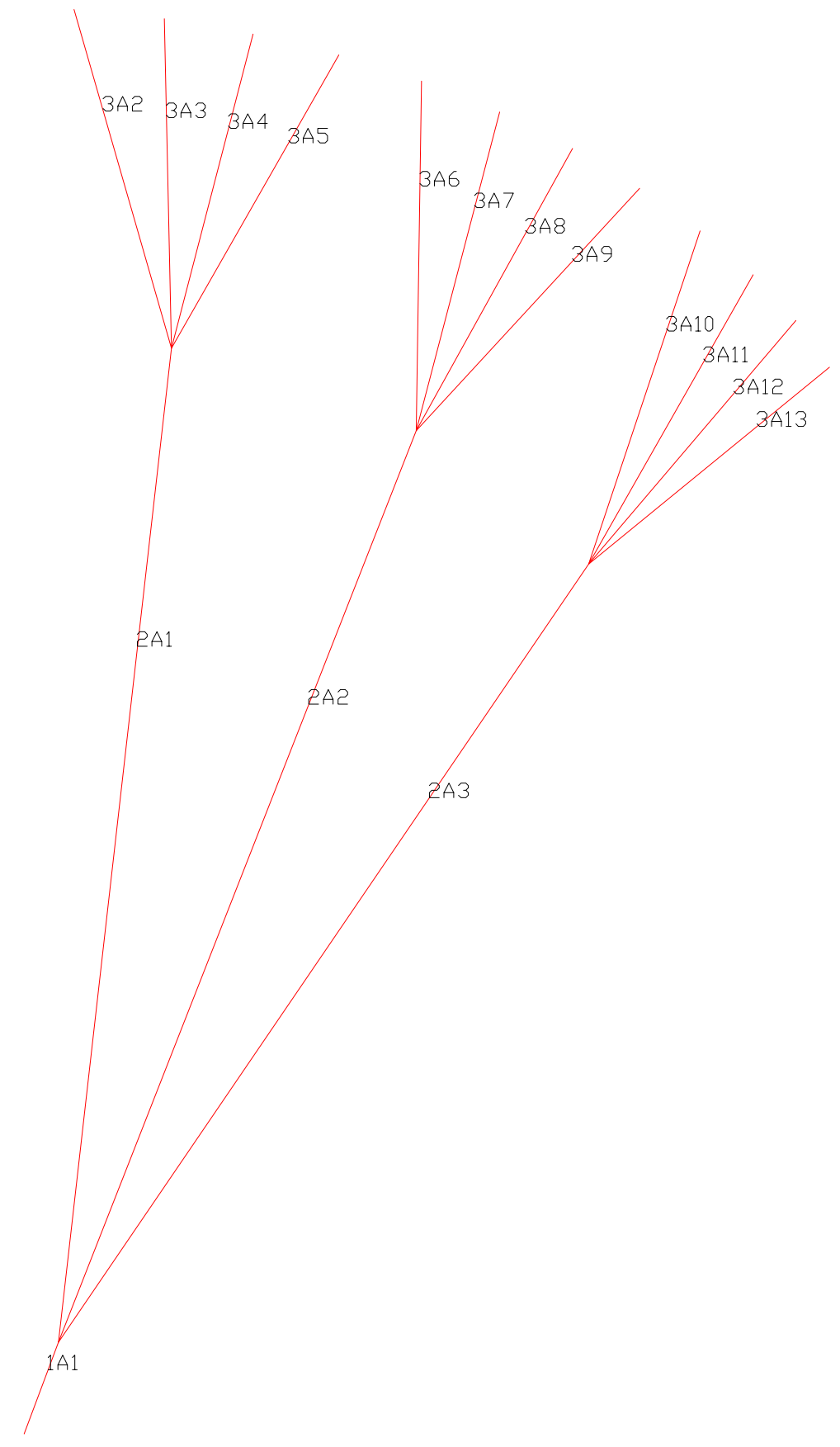




2-2 RIBS WASHIN ANGLE

Line - Label - Length

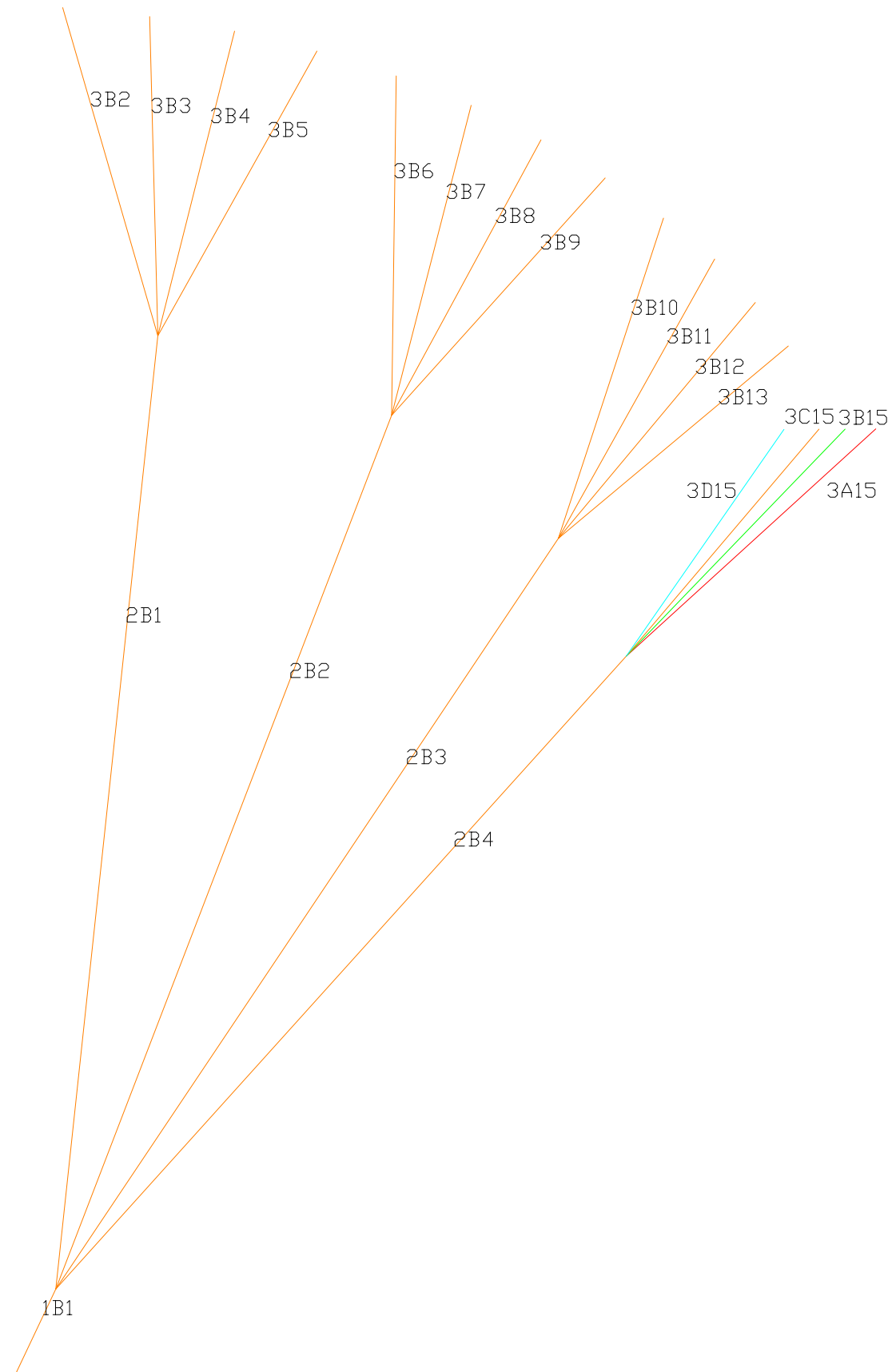
1	1A1	47.0
2	2A1	481.8
3	2A2	470.8
4	2A3	452.9
5	3A2	170.0
6	3A3	158.8
7	3A4	156.2
8	3A5	162.4
9	3A6	168.9
10	3A7	158.7
11	3A8	155.2
12	3A9	158.5
13	3A10	169.8
14	3A11	160.1
15	3A12	154.5
16	3A13	153.1



3-2 LINES A

Line - Label - Length

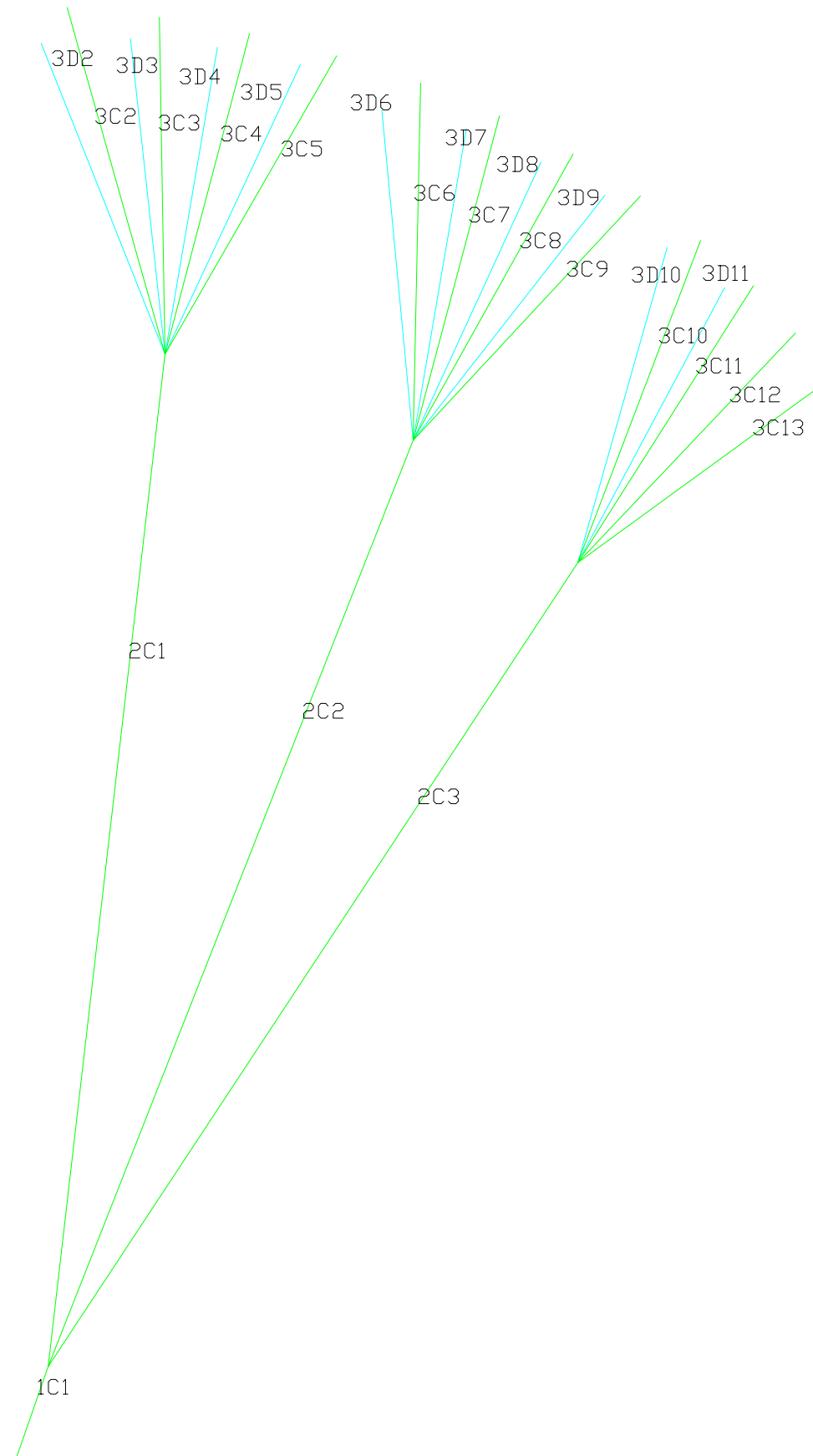
17	1B1	47.0
18	2B1	475.8
19	2B2	464.8
20	2B3	450.9
21	2B4	431.0
22	3B2	169.6
23	3B3	158.5
24	3B4	155.9
25	3B5	162.0
26	3B6	168.5
27	3B7	158.8
28	3B8	155.7
29	3B9	159.1
30	3B10	167.6
31	3B11	158.9
32	3B12	155.9
33	3B13	154.5
34	3A15	153.8
35	3B15	153.4
36	3C15	157.0
37	3D15	164.3



3-3 LINES B

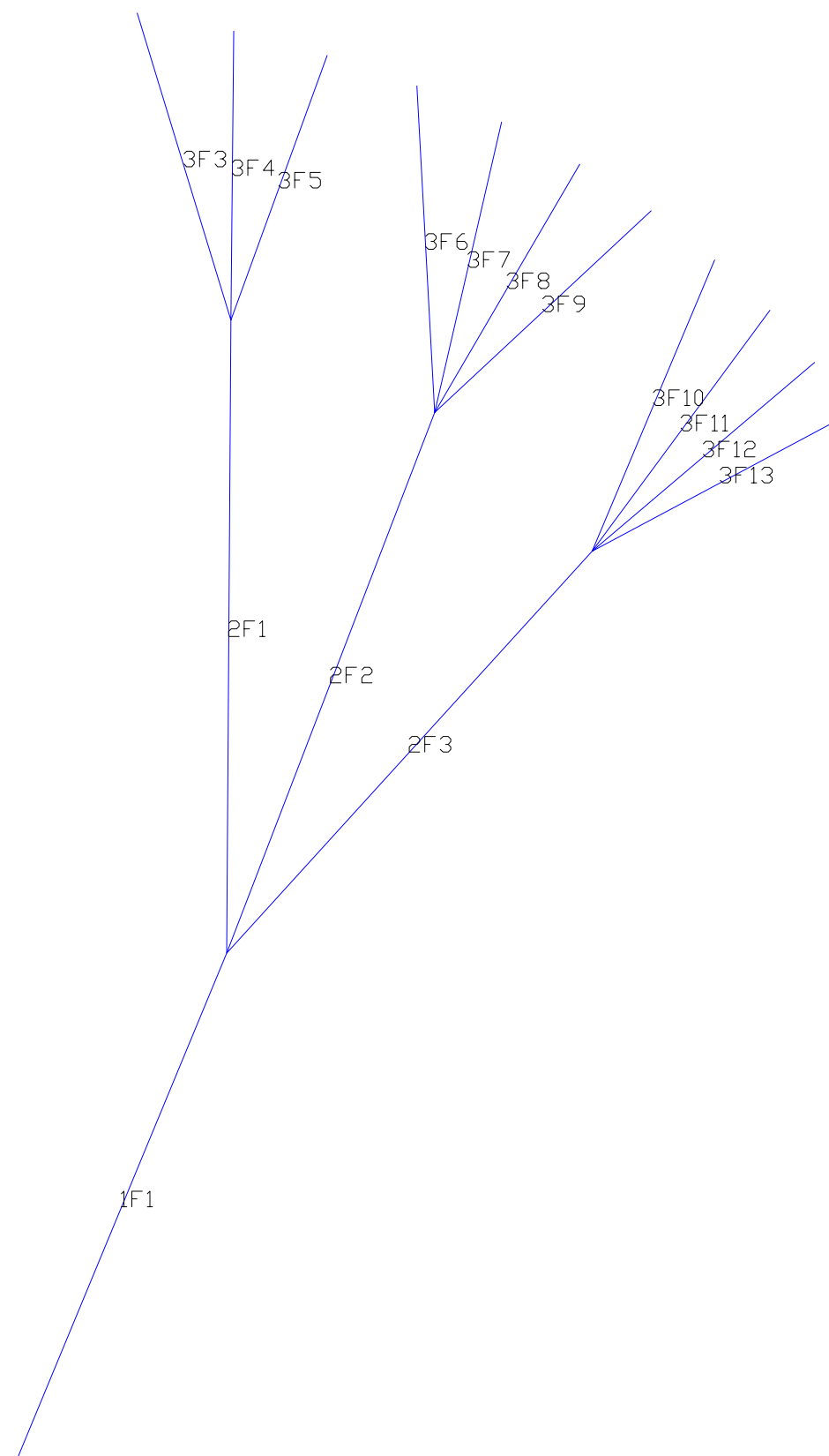
Line - Label - Length

38	1C1	47.0
39	2C1	490.8
40	2C2	479.8
41	2C3	465.9
42	3C2	163.6
43	3C3	152.2
44	3C4	149.7
45	3C5	156.3
46	3D2	181.8
47	3D3	171.3
48	3D4	168.7
49	3D5	174.2
50	3C6	162.9
51	3C7	152.8
52	3C8	149.5
53	3C9	152.9
54	3D6	179.6
55	3D7	169.7
56	3D8	165.8
57	3D9	167.9
58	3C10	159.1
59	3C11	151.6
60	3C12	156.2
61	3C13	153.4
62	3D10	170.7
63	3D11	162.7



Line - Label - Length

64	1F1	259.0
65	2F1	299.0
66	2F2	273.0
67	2F3	253.0
68	3F3	150.8
69	3F4	136.6
70	3F5	132.7
71	3F6	154.3
72	3F7	140.7
73	3F8	135.1
74	3F9	137.4
75	3F10	149.0
76	3F11	140.1
77	3F12	135.0
78	3F13	133.0



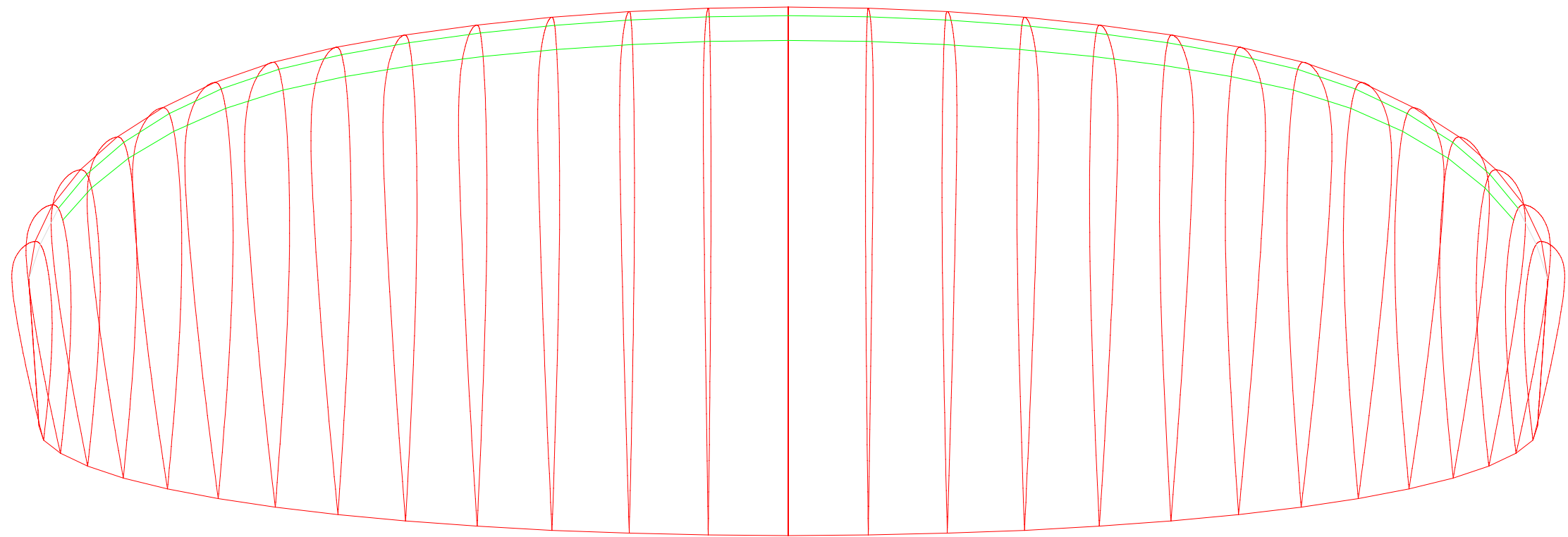
BRAKE_DISTRIBUTION
CENTER

0.000.000.000.00

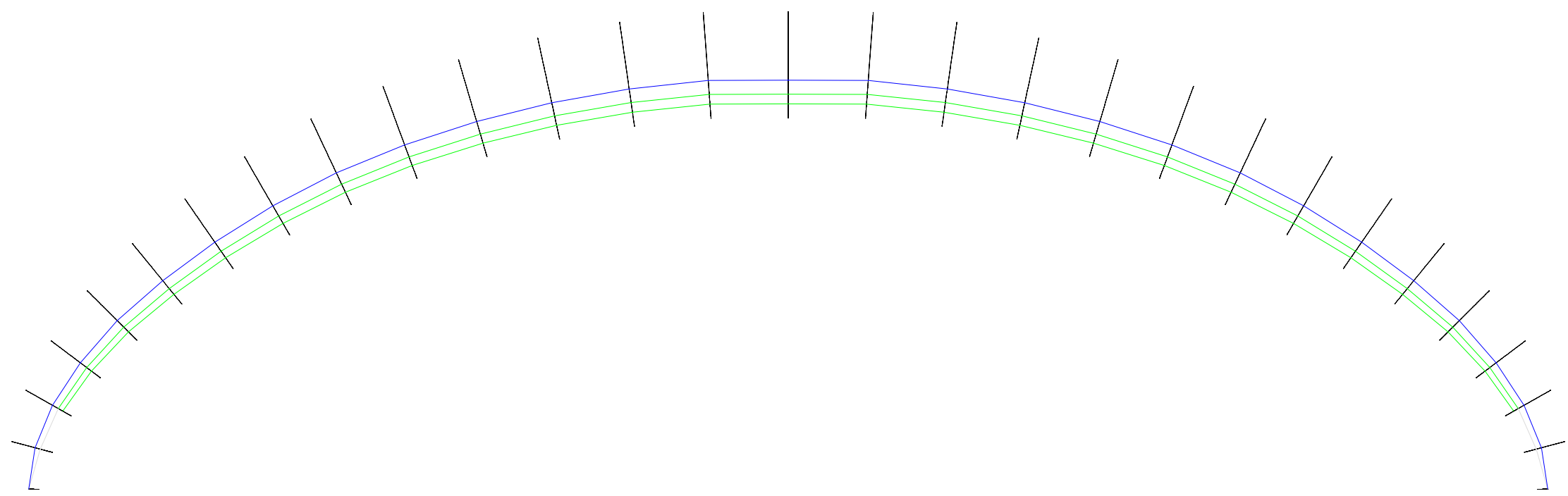
WING_TIP

0.00

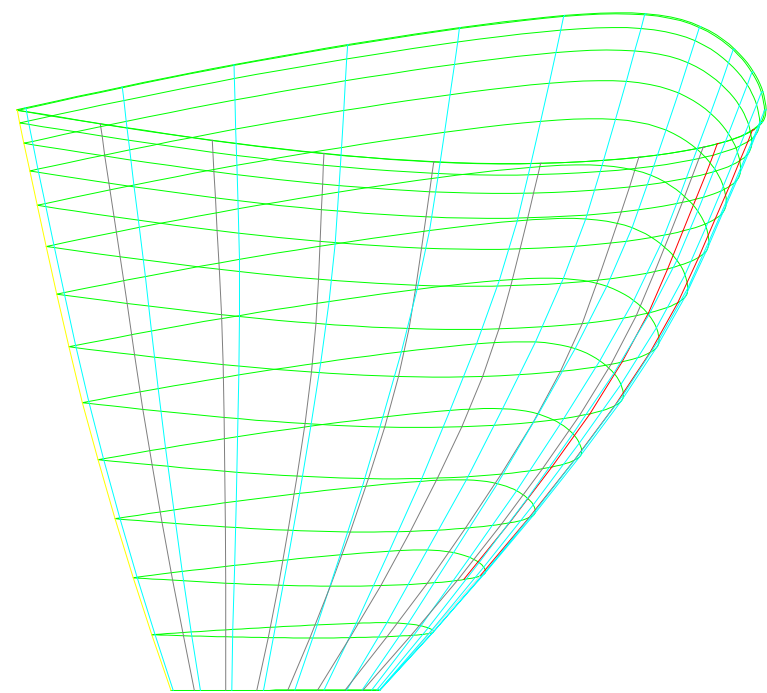
0.0025.0055.0070.00100.00



3-1 UPPER VIEW



4-1 VAULT VIEW



4-2 LATERAL VIEW

PLANS GENERAL NOTES

- 1-1: Planform and vault view (informative)
- 1-2: Ribs for plotter, one side
- 1-3: Extrados panels for plotter, one side
- 1-4: Ribs for laser cutting, one side. Units cm
- 1-5: Extrados for laser cutting, one side.Units cm
- 1-6: Middle unloaded ribs for laser cutting, one side Units cm
- 1-7: Rods pockets and nylons lengths, mylars
- 1-8: Intermediate and ovalized airfoils

- 2-1: Calage estimation, speed and trim systems
- 2-2: Ribs printed with washin angle (informative)
- 2-3: Intrados panels for plotter, one side
- 2-4: Mini-ribs horizontal and diagonal
- 2-5: Intrados for laser cutting, one side
- 2-6: Full diagonal ribs laser, one side
- 2-7: Free

- 3-1: Upper view 3D (informative)
- 3-2: Lines A
- 3-3: Lines B
- 3-4: Lines C
- 3-5: Lines D
- 3-6: V-rib type-6
- 3-7: Free

- 4-1: Vault view (informative)
- 4-2: Lateral view (informative)
- 4-3: Brake distribution (informative)
- 4-4: Free
- 4-5: Brake lines
- 4-6: Free
- 4-7: General notes

UNITS

Main units are centimeters. Scale x10 to use in mm

WIDTHS FOR SEWING AND OFFSETS

- Lateral width in extrados (mm): 15.00
- Width in leading edge ex (mm): 25.00
- Width in trailing edge ex (mm): 25.00
- Lateral width in intrados (mm): 15.00
- Width in leading edge in (mm): 25.00
- Width in trailing edge in (mm): 25.00
- Lateral width in ribs (mm): 15.00
- Lateral width in V-ribs (mm): 15.00
- General offset lateral points (mm): 1.20

Distance between equidistant points (cm): 25.00

"ROMAN" NUMBERS CODIFICATION

Numbering panels, ribs, mini-ribs, V-ribs

Number	1	=	...
Number	2	=	...
Number	3	=	...
Number	4	=	...
Number	5	=	...
Number	6	=	...
Number	7	=	...
Number	8	=	...
Number	9	=	...
Number	10	=	...
Number	11	=	...
Number	12	=	...
Number	13	=	...
Number	14	=	...
Number	15	=	...