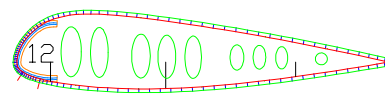
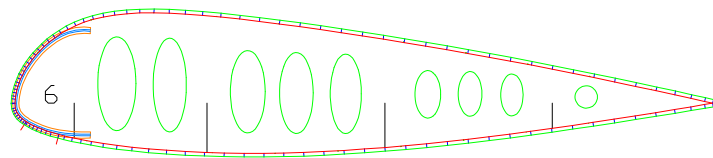
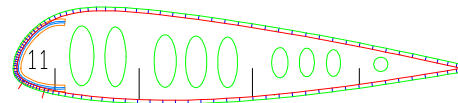
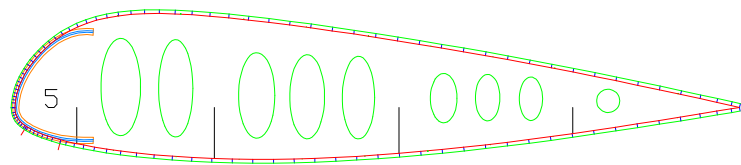
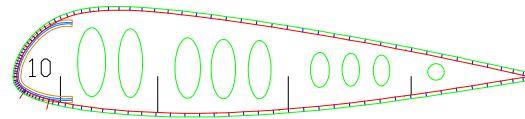
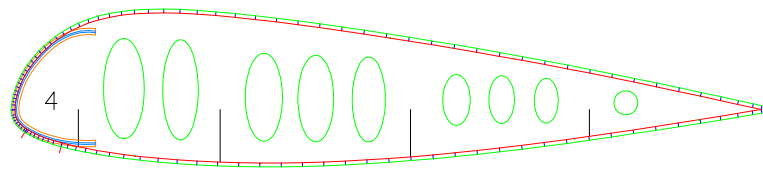
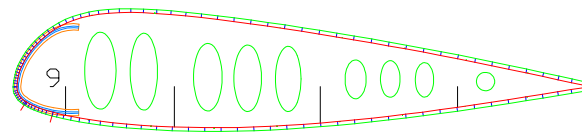
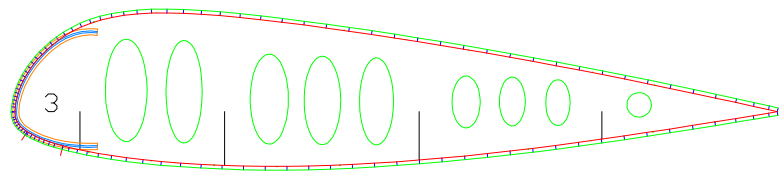
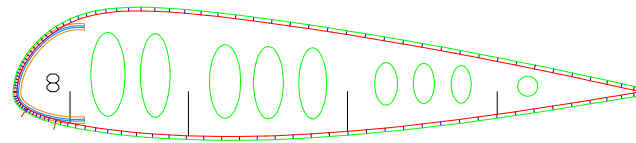
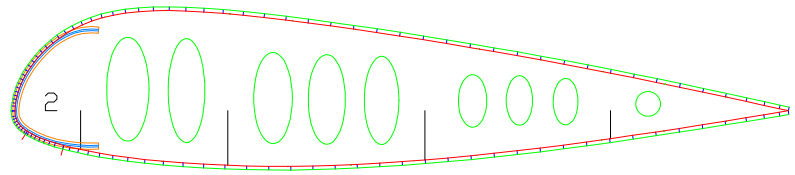
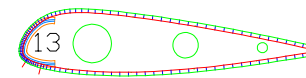
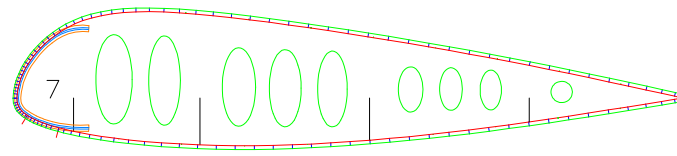
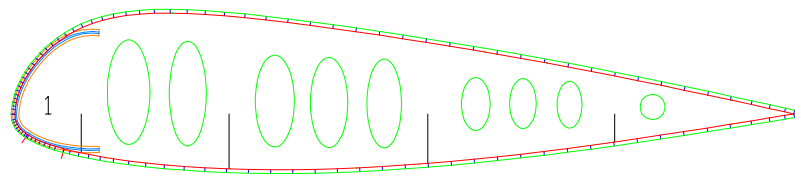
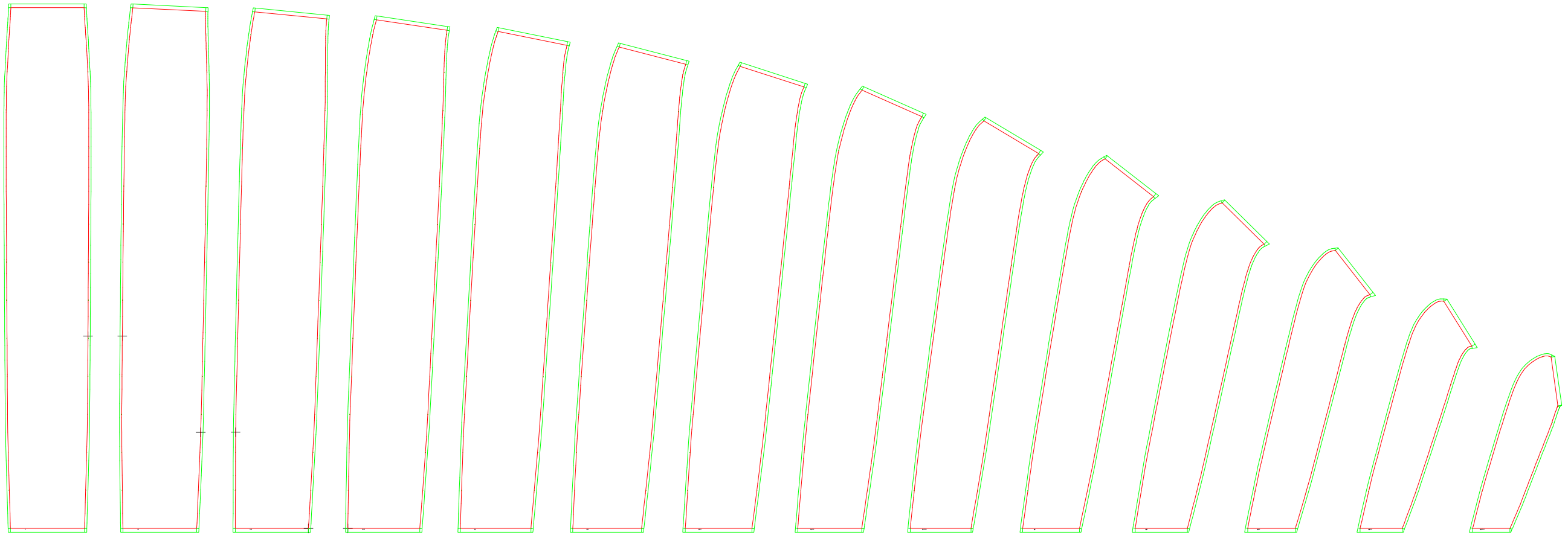


LABORATORI D'ENVOlgnuA1
 Flat area (m2) : 27.02
 Flat span (m) : 10.78
 Flat aspect ratio : 4.30
 Cells number : 27

1-1 PLANFORM AND VAULT



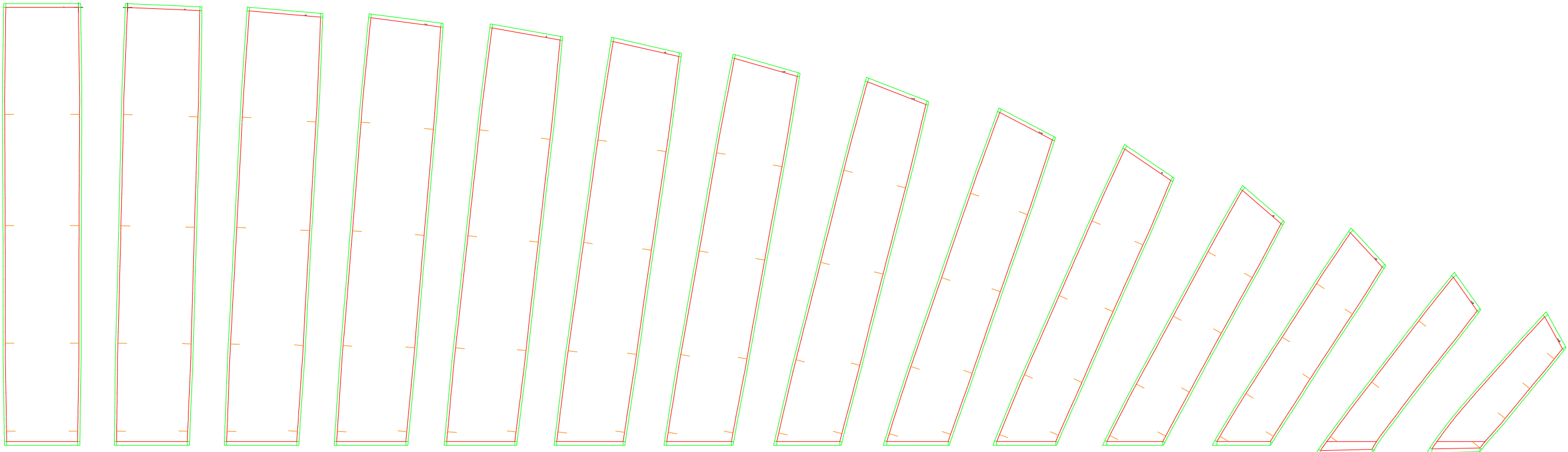
Leading edge



Trailing edge

1-3 EXTRADOS PANELS

Trailing edge



Leading edge

2-3 INTRADOS PANELS

0 1
[]

4 5
[]

8 9
[]

0 1
[]

4 5
[]

8 9
[]

0 1
[]

4 5
[]

8 9
[]

0 1
[]

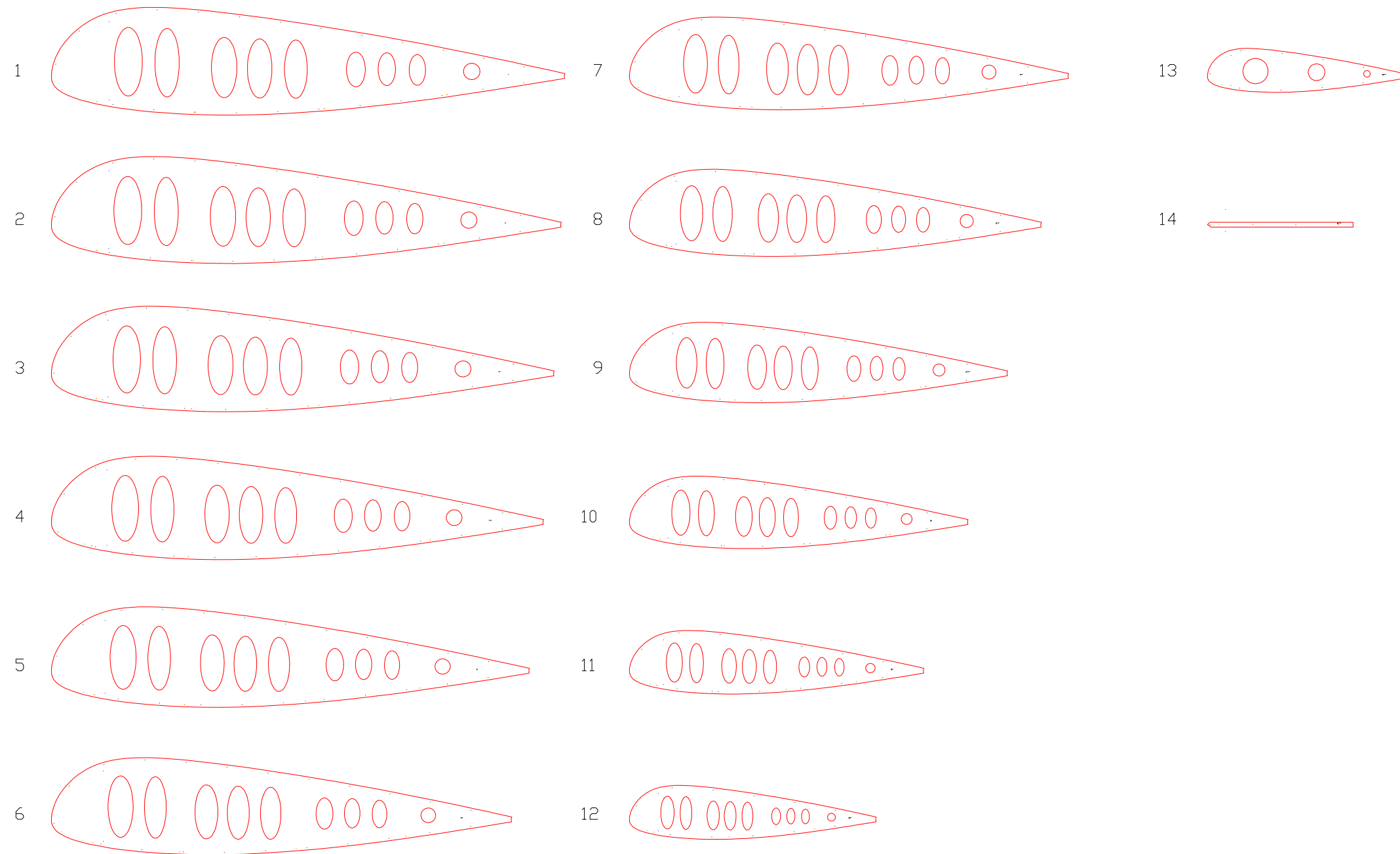
4 5
[]

8 9
[]



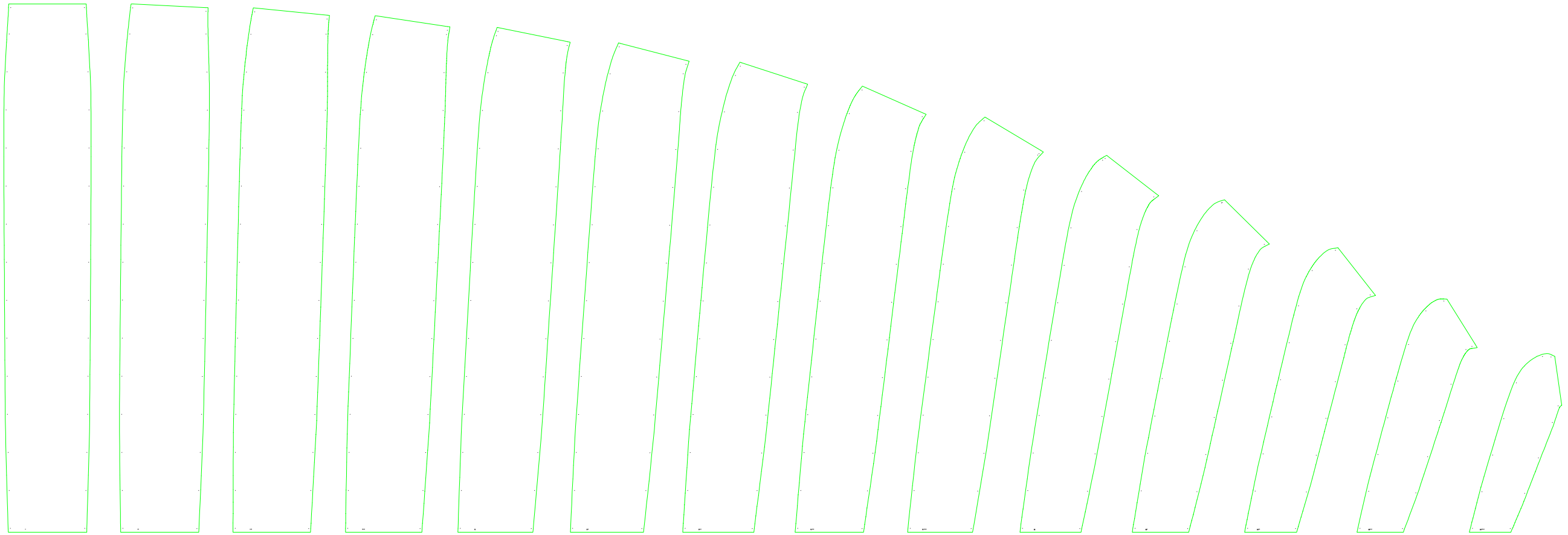
List of nylon rods (bloc 1)

Group 1		
Jonc 1		91.0
Jonc 2		90.4
Jonc 3		89.1
Jonc 4		87.2
Jonc 5		84.7
Jonc 6		81.5
Jonc 7		77.8
Jonc 8		72.9
Jonc 9		66.9
Jonc 10		59.8
Group 2		
Jonc 11		51.9
Jonc 12		43.5
Jonc 13		34.6



1-4 RIBS (FOR CUTTING TABLE)

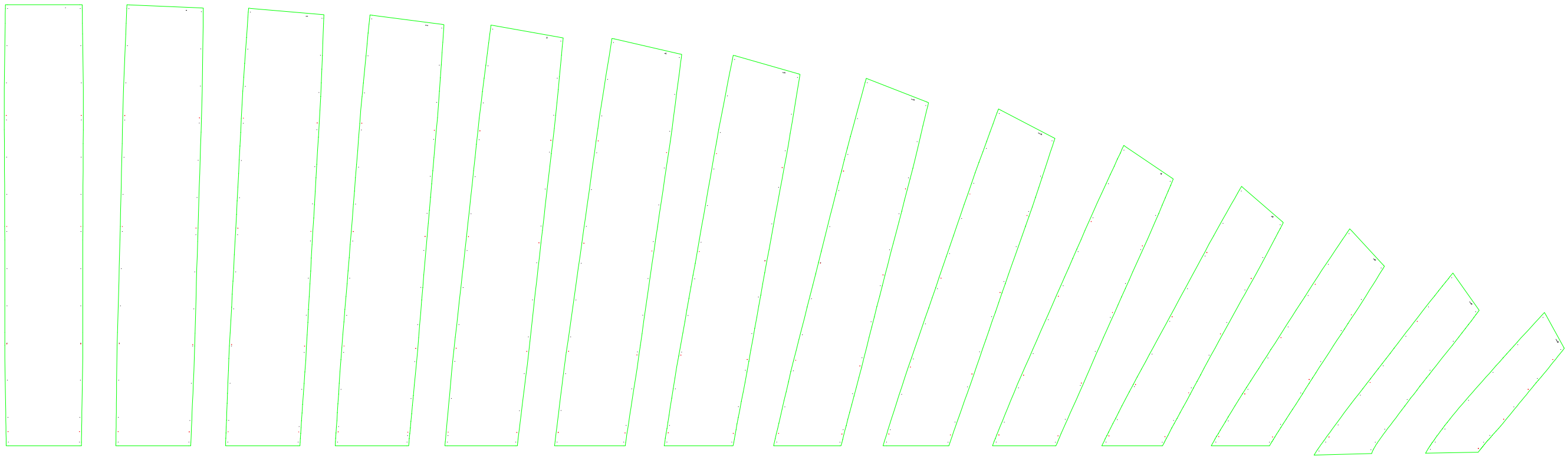
Leading edge



Trailing edge

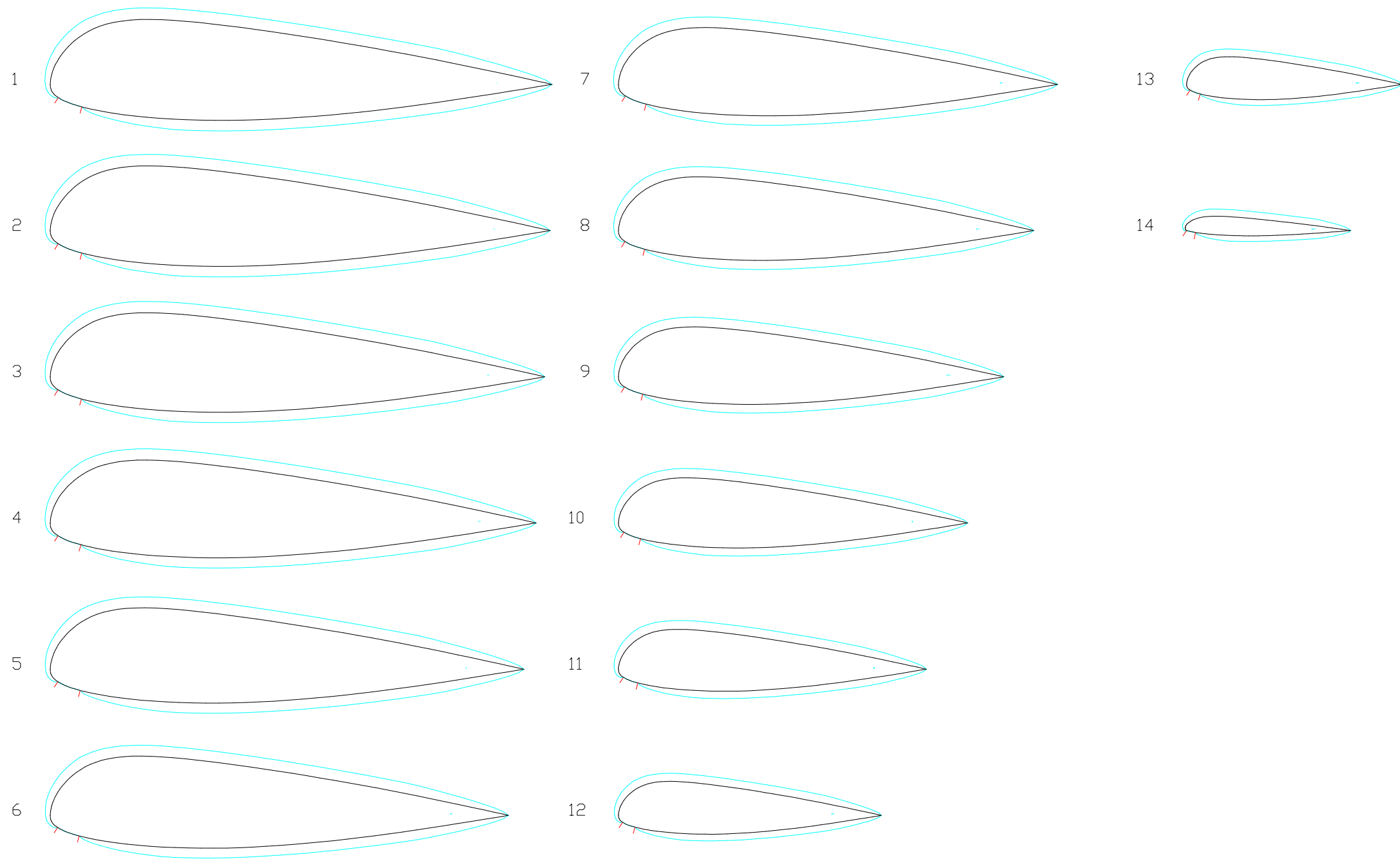
1-5 EXTRADOS PANELS (FOR CUTTING TABLE)

Trailing edge

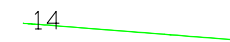
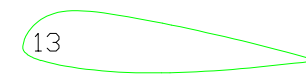
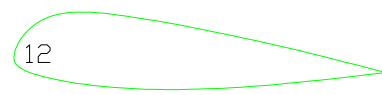
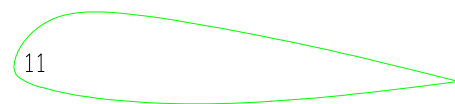
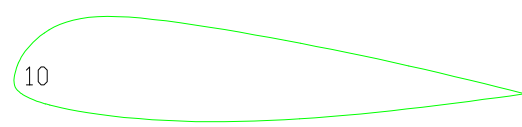
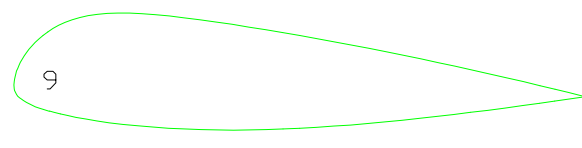
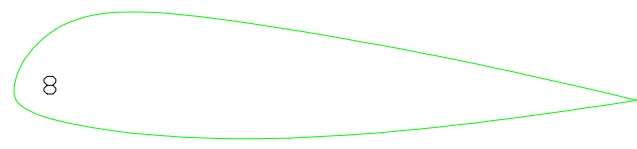
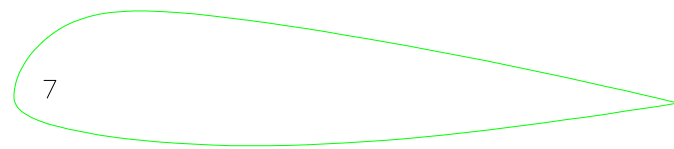
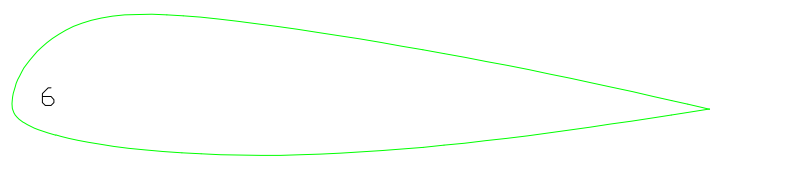
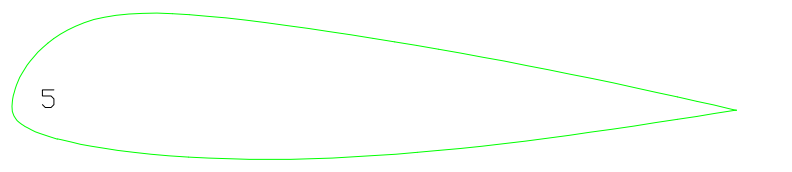
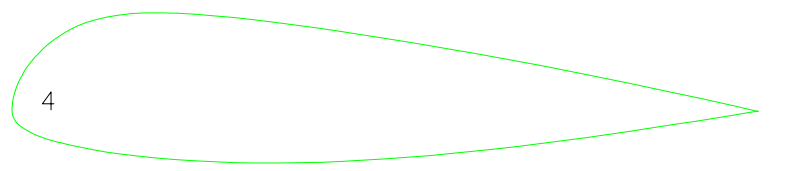
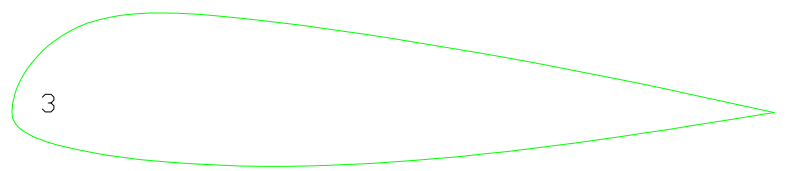
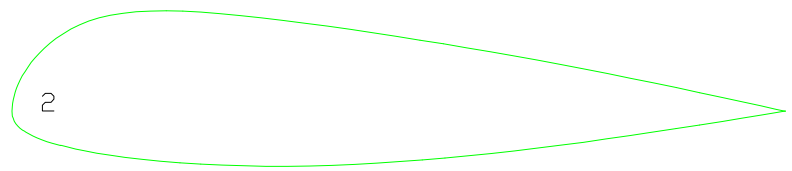
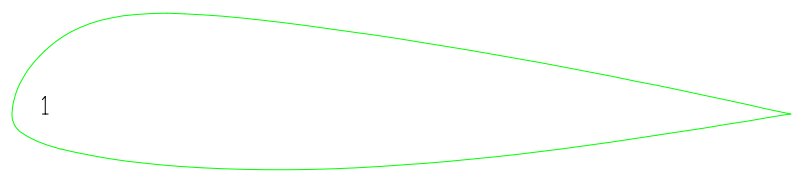


Leading edge

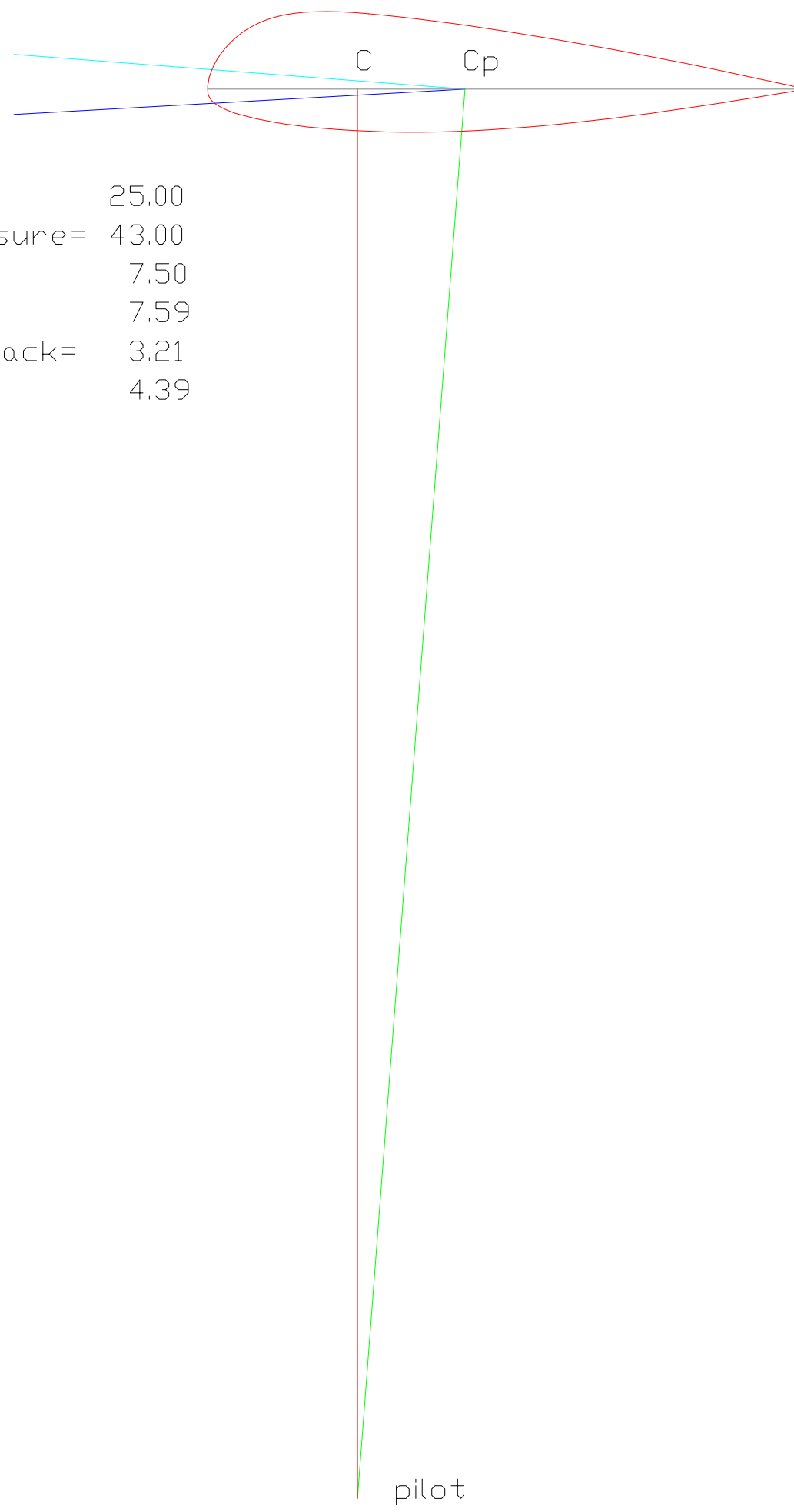
2-5 INTRADOS PANELS (FOR CUTTING TABLE)



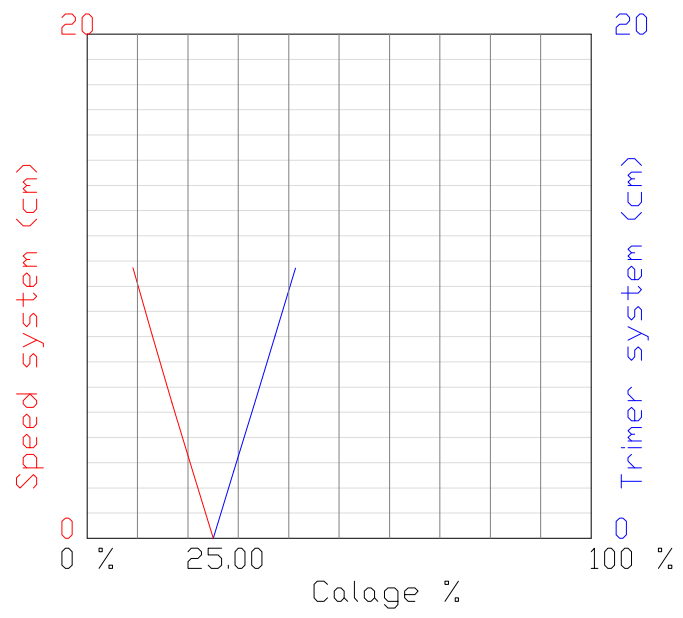
1-8 MIDDLE AND MIDDLE OVALIZED AIRFOILS



2-2 RIBS WASHIN ANGLE



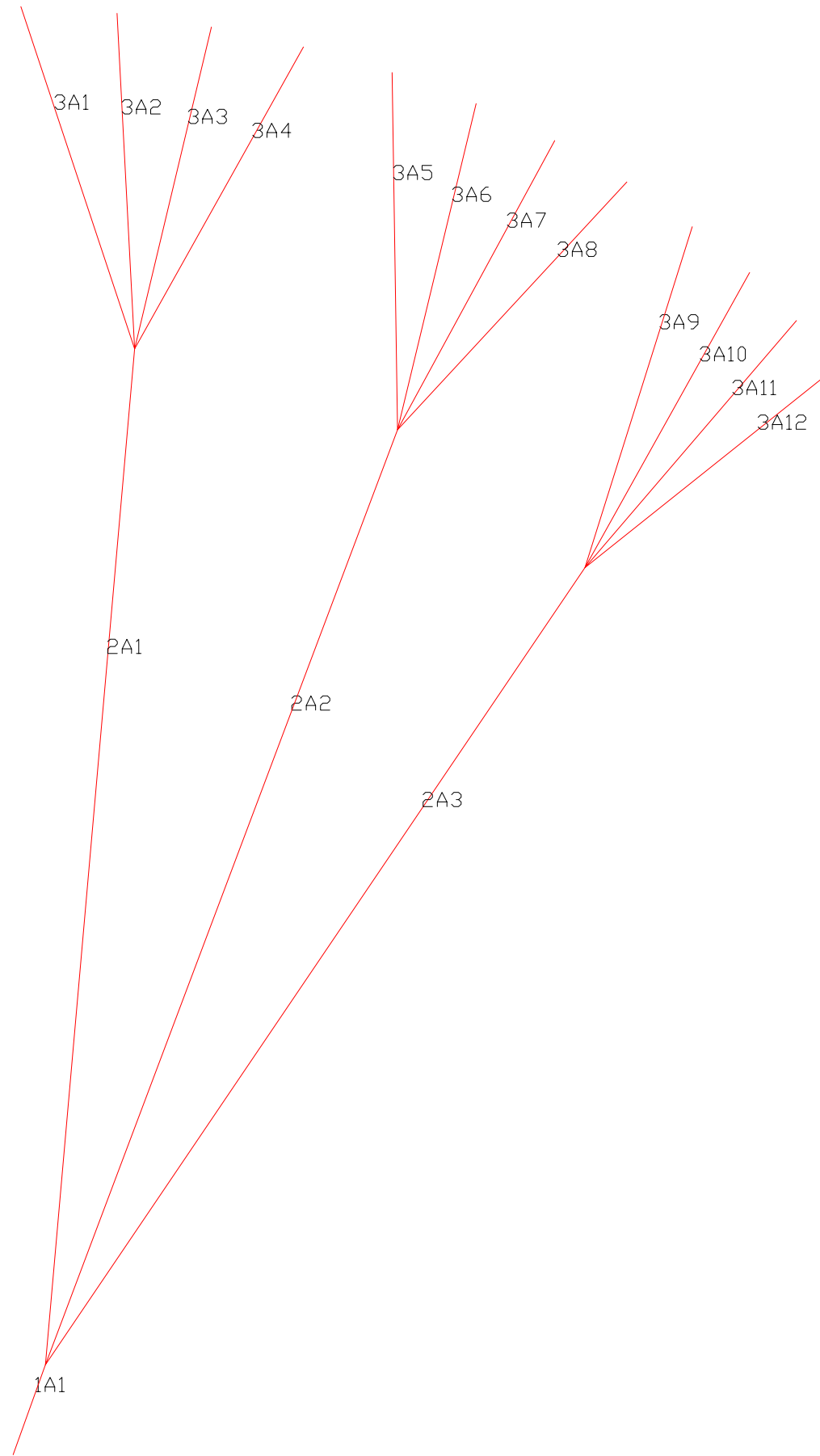
calage= 25.00
 center pressure= 43.00
 glide ratio= 7.50
 glide angle= 7.59
 angle of attack= 3.21
 assiette= 4.39



2-1 CALAGE ESTIMATION

Line - Label - Length

1	1A1	47.0
2	2A1	501.7
3	2A2	490.8
4	2A3	472.8
5	3A1	177.6
6	3A2	165.3
7	3A3	162.7
8	3A4	169.9
9	3A5	176.2
10	3A6	165.0
11	3A7	161.6
12	3A8	165.8
13	3A9	176.5
14	3A10	165.9
15	3A11	160.2
16	3A12	159.1



3-2 LINES A

Line - Label - Length

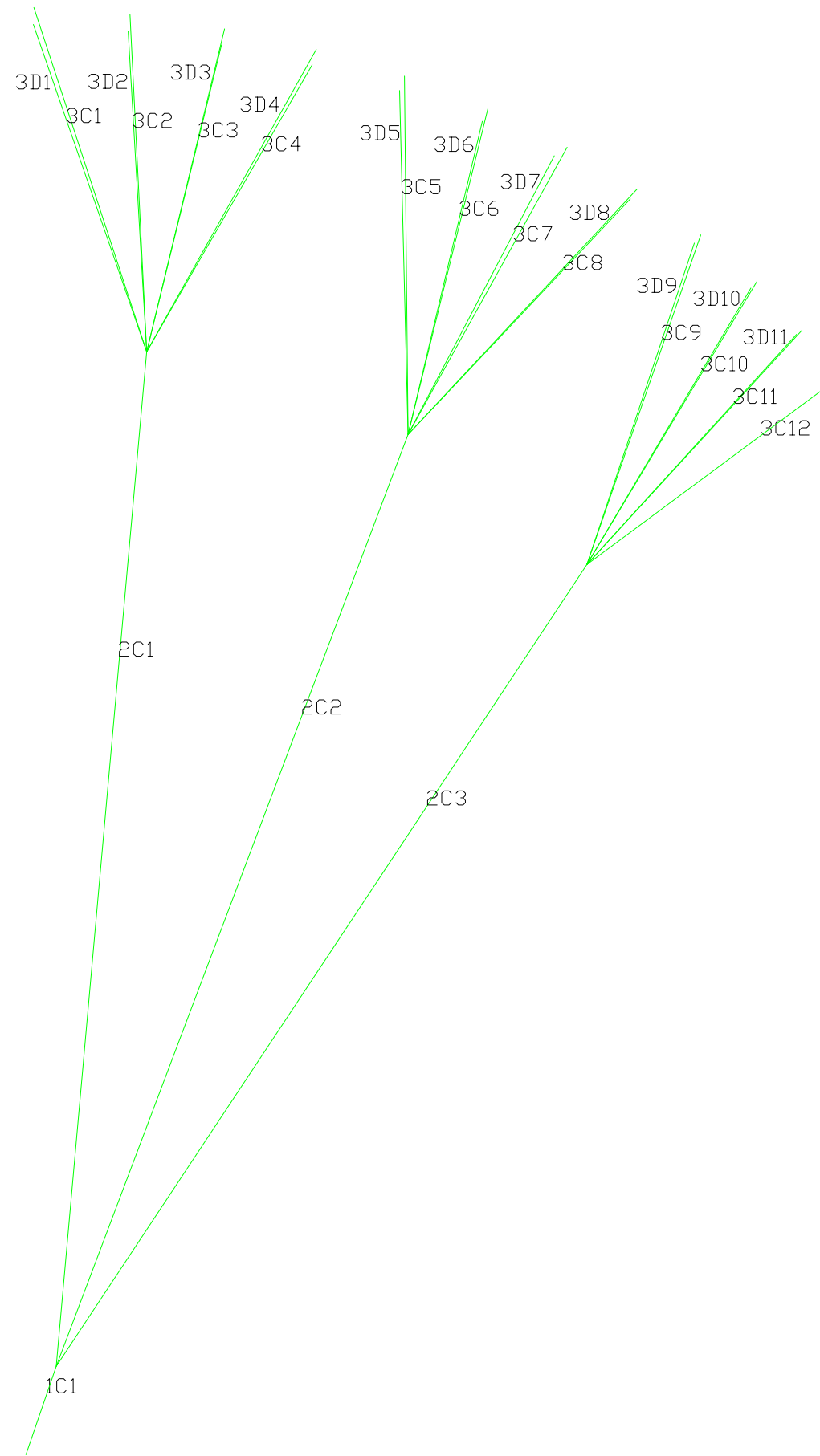
17	1B1	47.0
18	2B1	495.7
19	2B2	484.8
20	2B3	469.8
21	2B4	449.0
22	3B1	177.0
23	3B2	164.8
24	3B3	162.1
25	3B4	169.1
26	3B5	175.4
27	3B6	164.8
28	3B7	161.7
29	3B8	165.9
30	3B9	174.3
31	3B10	164.9
32	3B11	159.8
33	3B12	161.8
34	3A14	160.2
35	3B14	159.5
36	3C14	163.1
37	3D14	170.6



3-3 LINES B

Line - Label - Length

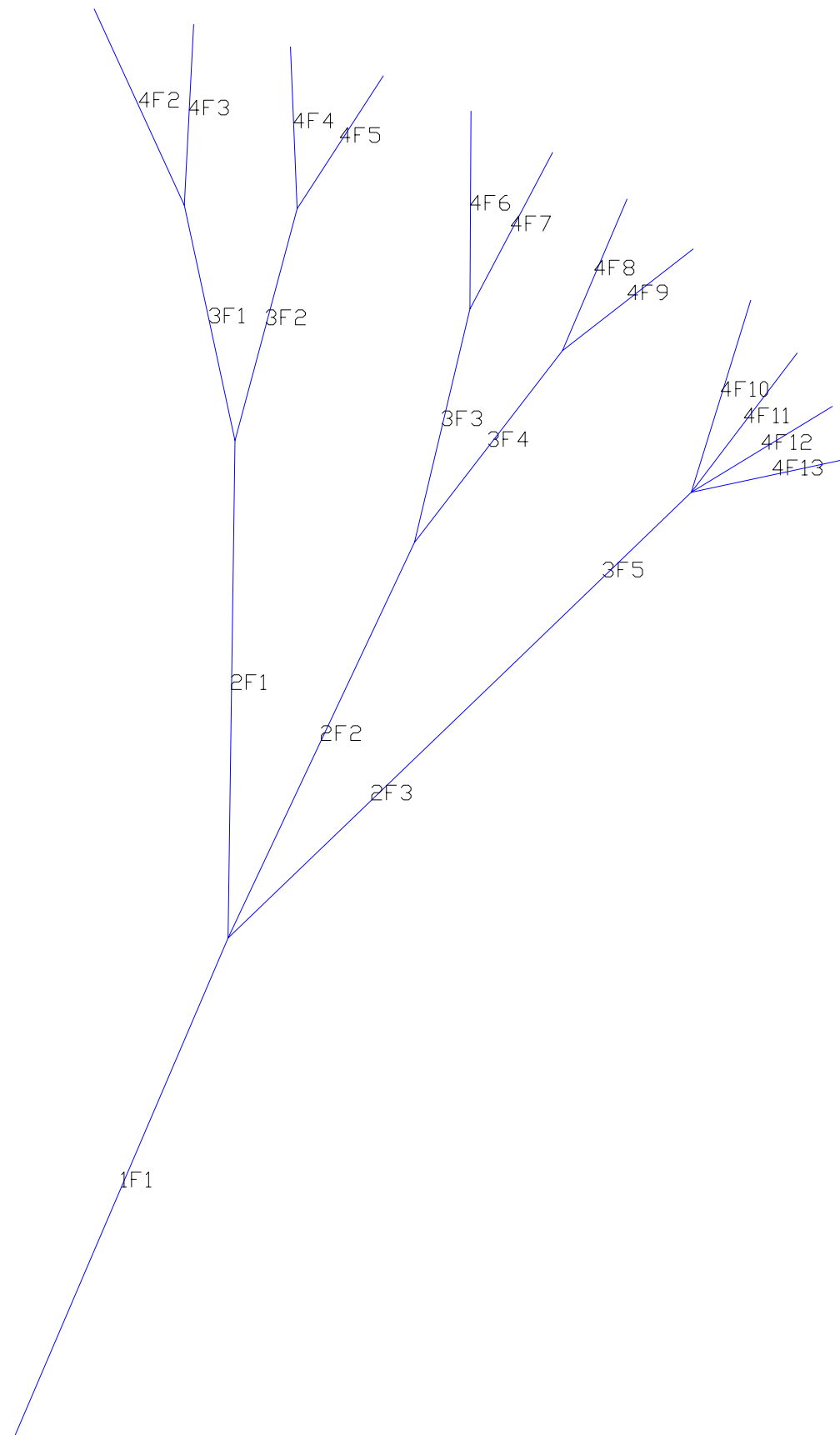
38	1C1	47.0
39	2C1	510.8
40	2C2	499.8
41	2C3	483.9
42	3C1	171.4
43	3C2	158.9
44	3C3	156.3
45	3C4	163.9
46	3D1	190.4
47	3D2	178.8
48	3D3	176.2
49	3D4	182.6
50	3C5	170.2
51	3C6	159.2
52	3C7	155.9
53	3C8	160.0
54	3D5	187.8
55	3D6	176.9
56	3D7	172.9
57	3D8	175.8
58	3C9	167.5
59	3C10	158.9
60	3C11	154.1
61	3C12	160.6
62	3D9	180.3
63	3D10	171.1
64	3D11	165.3



3-4 LINES C

Line - Label - Length

65	1F1	270.0
66	2F1	249.0
67	2F2	218.0
68	2F3	196.0
69	3F1	120.0
70	3F2	120.0
71	3F3	120.0
72	3F4	120.0
73	3F5	120.0
74	4F2	106.9
75	4F3	90.6
76	4F4	80.9
77	4F5	78.4
78	4F6	98.9
79	4F7	88.1
80	4F8	82.1
81	4F9	81.0
82	4F10	100.7
83	4F11	86.6
84	4F12	80.4
85	4F13	79.9



4-5 BRAKES

BRAKE_DISTRIBUTION
CENTER

0.00

0.00

0.00

0.00

WING_TIP

0.00

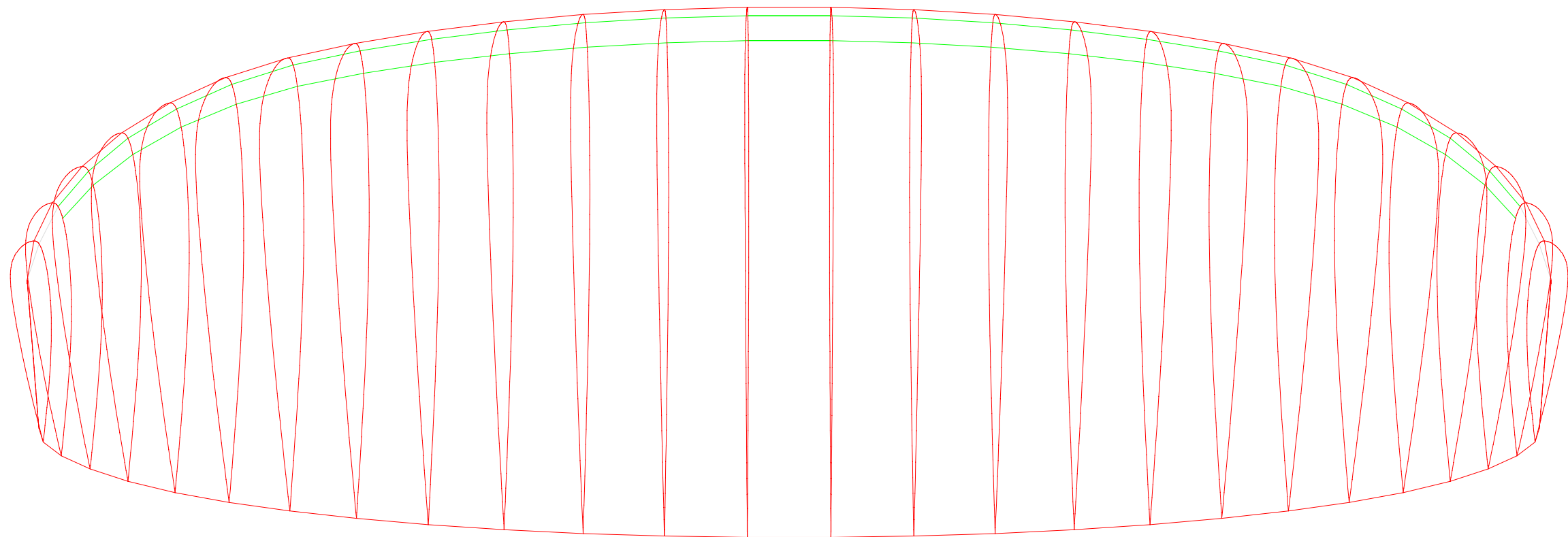
0.00

25.00

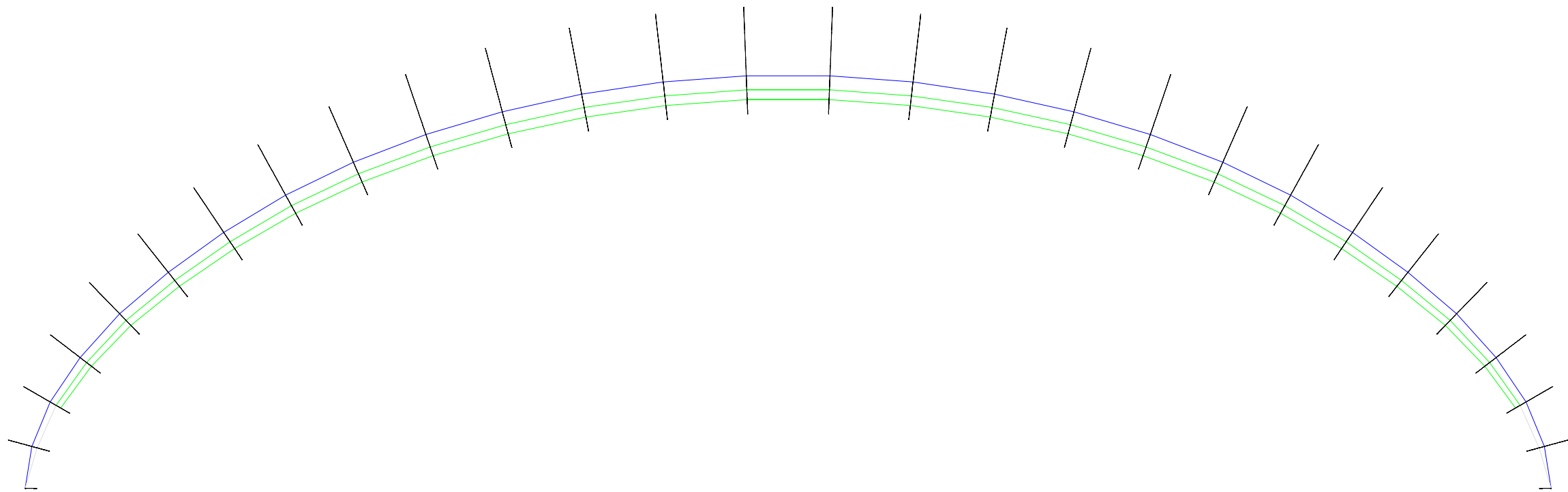
55.00

70.00

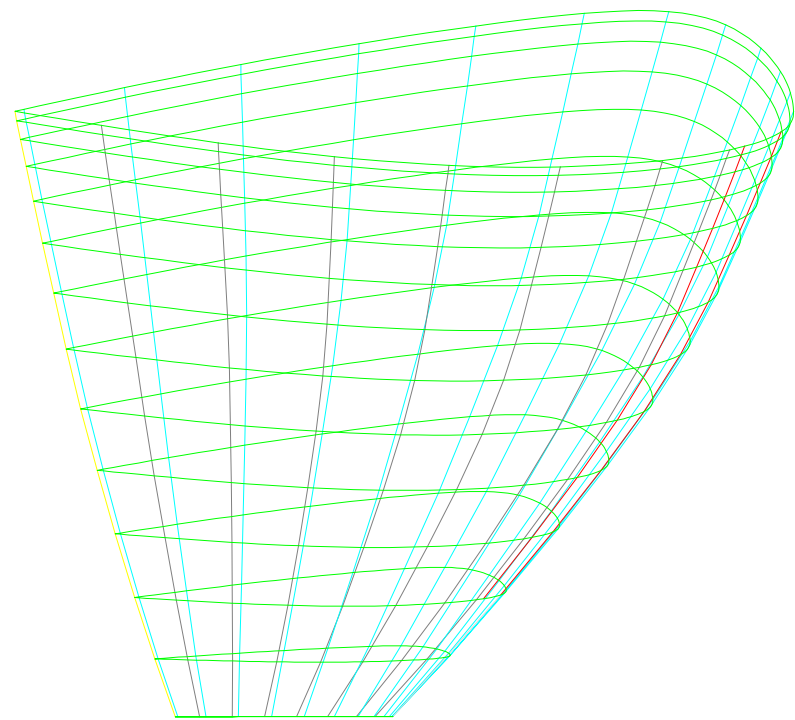
100.00



3-1 UPPER VIEW



4-1 VAULT VIEW



4-2 LATERAL VIEW

PLANS GENERAL NOTES

- 1-1: Planform and vault view (informative)
- 1-2: Ribs for plotter, one side
- 1-3: Extradados panels for plotter, one side
- 1-4: Ribs for laser cutting, one side. Units cm
- 1-5: Extradados for laser cutting, one side. Units cm
- 1-6: Middle unloaded ribs for laser cutting, one side Units cm
- 1-7: Rods pockets and nylons lengths, mylars
- 1-8: Intermediate and ovalized airfoils

- 2-1: Calage estimation, speed and trim systems
- 2-2: Ribs printed with washin angle (informative)
- 2-3: Intrados panels for plotter, one side
- 2-4: Mini-ribs horizontal and diagonal
- 2-5: Intrados for laser cutting, one side
- 2-6: Full diagonal ribs laser, one side
- 2-7: Free

- 3-1: Upper view 3D (informative)
- 3-2: Lines A
- 3-3: Lines B
- 3-4: Lines C
- 3-5: Lines D
- 3-6: V-rib type-6
- 3-7: Free

- 4-1: Vault view (informative)
- 4-2: Lateral view (informative)
- 4-3: Brake distribution (informative)
- 4-4: Free
- 4-5: Brake lines
- 4-6: Free
- 4-7: General notes

UNITS

Main units are centimeters. Scale x10 to use in mm

WIDTHS FOR SEWING AND OFFSETS

- Lateral width in extradados (mm): 15.00
- Width in leading edge ex (mm): 25.00
- Width in trailing edge ex (mm): 25.00
- Lateral width in intrados (mm): 15.00
- Width in leading edge in (mm): 25.00
- Width in trailing edge in (mm): 25.00
- Lateral width in ribs (mm): 15.00
- Lateral width in V-ribs (mm): 15.00
- General offset lateral points (mm): 1.20

- Distance between equidistant points (cm): 25.00

"ROMAN" NUMBERS CODIFICATION

Numbering panels, ribs, mini-ribs, V-ribs

- Number 1 =
- Number 2 =
- Number 3 =
- Number 4 =
- Number 5 =
- Number 6 =
- Number 7 =
- Number 8 =
- Number 9 =
- Number 10 =
- Number 11 =
- Number 12 =
- Number 13 =
- Number 14 =